

ACC α Polyclonal Antibody

Catalog No: #40539

Package Size: #40539-1 50ul #40539-2 100ul

Orders: order@signalwayantibody.com

Support: tech@signalwayantibody.com

Description

| | |
|-----------------------|---|
| Product Name | ACC α Polyclonal Antibody |
| Host Species | Rabbit |
| Clonality | Polyclonal |
| Purification | The antibody was affinity-purified from rabbit antiserum by affinity-chromatography using epitope-specific immunogen. |
| Applications | WB IHC ELISA |
| Species Reactivity | Hu Ms Rt |
| Specificity | ACC α Polyclonal Antibody detects endogenous levels of ACC α protein. |
| Immunogen Type | peptide |
| Immunogen Description | Synthesized peptide derived from human ACC α around the non-phosphorylation site of S80. |
| Target Name | ACC α |
| Other Names | ACACA; ACAC; ACC1; ACCA; Acetyl-CoA carboxylase 1; ACC1; ACC-alpha |
| Accession No. | Swiss-Prot: Q13085NCBI Gene ID: 31 |
| Uniprot | Q13085 |
| GeneID | 31; |
| SDS-PAGE MW | 265kd |
| Concentration | 1mg/ml |
| Formulation | Liquid in PBS containing 50% glycerol, 0.5% BSA and 0.02% sodium azide. |
| Storage | Store at -20°C/1 year |

Application Details

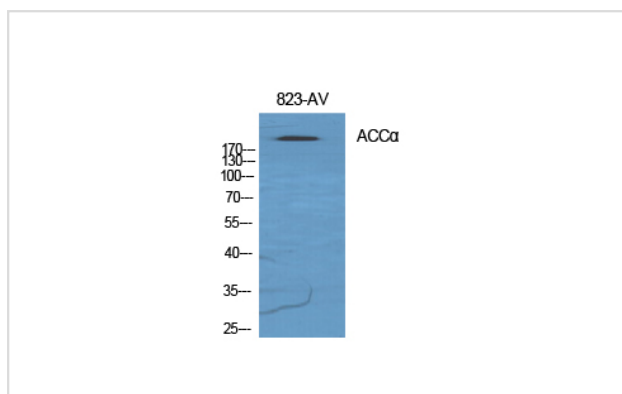
Western Blot: 1/500 - 1/2000.

Immunohistochemistry: 1/100 - 1/300.

ELISA: 1/5000.

Not yet tested in other applications.

Images

Western Blot analysis of 823-AV cells using ACC α Polyclonal Antibody

Note: This product is for in vitro research use only