

Acrp30 Polyclonal Antibody

Catalog No: #40546

Package Size: #40546-1 50ul #40546-2 100ul

Orders: order@signalwayantibody.comSupport: tech@signalwayantibody.com

Description

| | |
|-----------------------|--|
| Product Name | Acrp30 Polyclonal Antibody |
| Host Species | Rabbit |
| Clonality | Polyclonal |
| Purification | The antibody was affinity-purified from rabbit antiserum by affinity-chromatography using epitope-specific immunogen. |
| Applications | WB ELISA |
| Species Reactivity | Hu Ms Rt |
| Specificity | Acrp30 Polyclonal Antibody detects endogenous levels of Acrp30 protein. |
| Immunogen Type | peptide |
| Immunogen Description | Synthesized peptide derived from the Internal region of human Acrp30. |
| Target Name | Acrp30 |
| Other Names | ADIPOQ; ACDC; ACRP30; APM1; GBP28; Adiponectin; 30 kDa adipocyte complement-related protein; Adipocyte complement-related 30 kDa protein; ACRP30; Adipocyte; C1q and collagen domain-containing protein; Adipose most abundant gene transcript 1 |
| Accession No. | Swiss-Prot: Q15848NCBI Gene ID: 9370 |
| Uniprot | Q15848 |
| GeneID | 9370; |
| SDS-PAGE MW | 30kd |
| Concentration | 1mg/ml |
| Formulation | Liquid in PBS containing 50% glycerol, 0.5% BSA and 0.02% sodium azide. |
| Storage | Store at -20°C/1 year |

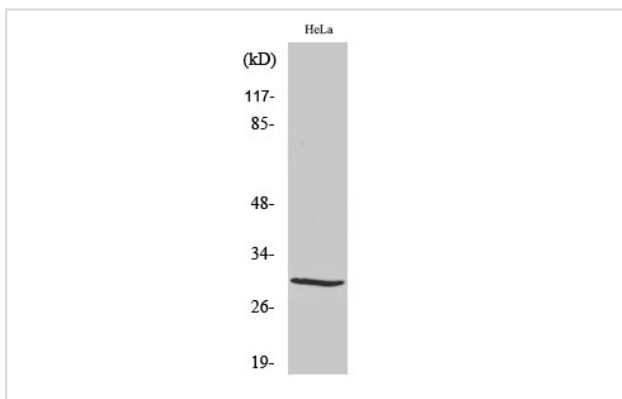
Application Details

Western Blot: 1/500 - 1/2000.

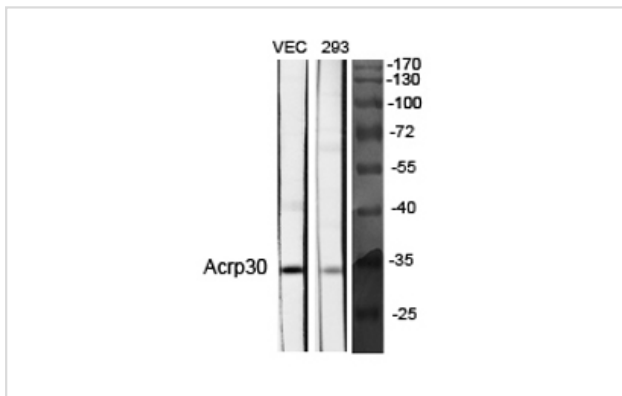
ELISA: 1/10000.

Not yet tested in other applications.

Images



Western Blot analysis of HeLa cells using Acrp30 Polyclonal Antibody



Western Blot analysis of VEC 293 cells using Acrp30 Polyclonal Antibody

Note: This product is for in vitro research use only