

ACSVL6 Polyclonal Antibody

Catalog No: #40548

Package Size: #40548-1 50ul #40548-2 100ul

Orders: order@signalwayantibody.comSupport: tech@signalwayantibody.com

Description

Product Name	ACSVL6 Polyclonal Antibody
Host Species	Rabbit
Clonality	Polyclonal
Purification	The antibody was affinity-purified from rabbit antiserum by affinity-chromatography using epitope-specific immunogen.
Applications	WB IHC IF ELISA
Species Reactivity	Hu
Specificity	ACSVL6 Polyclonal Antibody detects endogenous levels of ACSVL6 protein.
Immunogen Type	peptide
Immunogen Description	Synthesized peptide derived from the Internal region of human ACSVL6.
Target Name	ACSVL6
Other Names	SLC27A5; ACSB; ACSVL6; FACVL3; FATP5; Bile acyl-CoA synthetase; BACS; Bile acid-CoA ligase; BA-CoA ligase; BAL; Cholate--CoA ligase; Fatty acid transport protein 5; FATP-5; Fatty-acid-coenzyme A ligase; very long-chain 3; Solute carrier fam
Accession No.	Swiss-Prot: Q9Y2P5NCBI Gene ID: 10998
Uniprot	Q9Y2P5
GeneID	10998;
SDS-PAGE MW	75kd
Concentration	1mg/ml
Formulation	Liquid in PBS containing 50% glycerol, 0.5% BSA and 0.02% sodium azide.
Storage	Store at -20°C/1 year

Application Details

Western Blot: 1/500 - 1/2000.

Immunohistochemistry: 1/100 - 1/300.

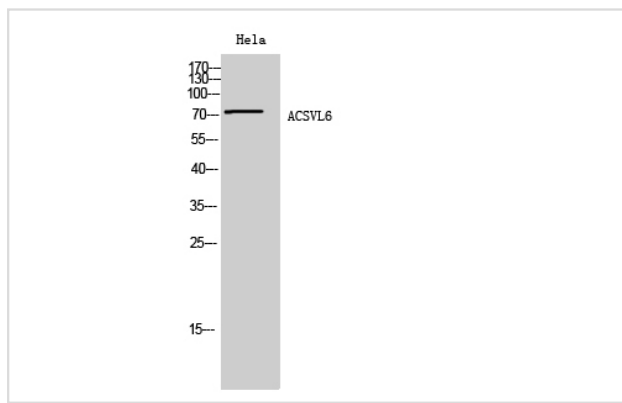
Immunofluorescence: 1/200 - 1/1000.

ELISA: 1/40000.

Not yet tested in other applications.

Images

Western Blot analysis of HeLa cells using ACSVL6 Polyclonal Antibody



Note: This product is for in vitro research use only