

## Actin Polyclonal Antibody

Catalog No: #40549

Package Size: #40549-1 50ul #40549-2 100ul

Orders: [order@signalwayantibody.com](mailto:order@signalwayantibody.com)Support: [tech@signalwayantibody.com](mailto:tech@signalwayantibody.com)

## Description

Product Name	Actin Polyclonal Antibody
Host Species	Rabbit
Clonality	Polyclonal
Purification	The antibody was affinity-purified from rabbit antiserum by affinity-chromatography using epitope-specific immunogen.
Applications	WB IHC ELISA
Species Reactivity	Hu Ms Rt
Specificity	Actin Polyclonal Antibody detects endogenous levels of Actin protein.
Immunogen Type	peptide
Immunogen Description	Synthesized peptide derived from the C-terminal region of human Actin.
Target Name	Actin
Other Names	ACTB; Actin; cytoplasmic 1; Beta-actin; POTEKP; ACTBL3; FKSG30; Putative beta-actin-like protein 3; Kappa-actin; POTE ankyrin domain family member K; ACTG1; ACTB; ACTG; Actin, cytoplasmic 2; Gamma-actin
Accession No.	Swiss-Prot: P60709/Q9BYX7/P63261NCBI Gene ID: 60/71
Uniprot	P60709
GeneID	60;
SDS-PAGE MW	45kd
Concentration	1mg/ml
Formulation	Liquid in PBS containing 50% glycerol, 0.5% BSA and 0.02% sodium azide.
Storage	Store at -20°C/1 year

## Application Details

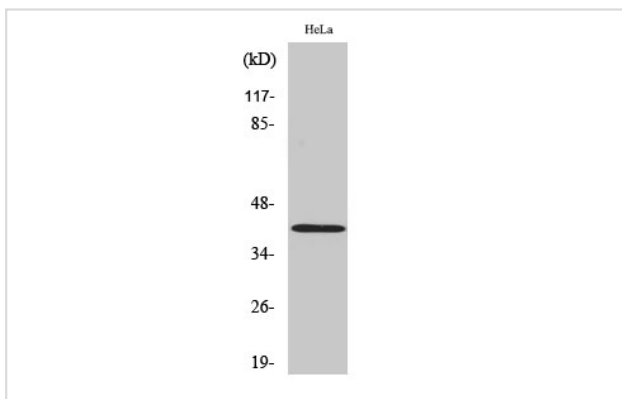
Western Blot: 1/500 - 1/2000.

Immunohistochemistry: 1/100 - 1/300.

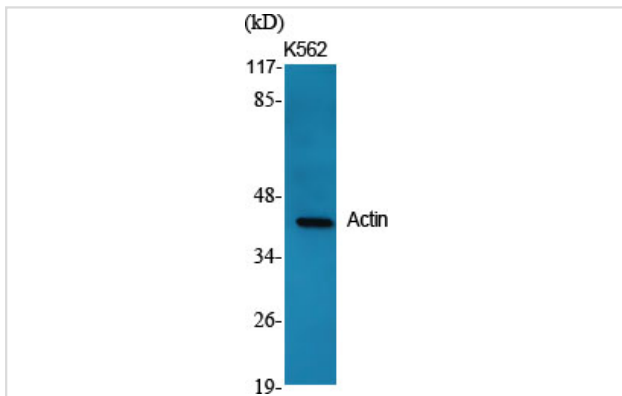
ELISA: 1/10000.

Not yet tested in other applications.

## Images



Western Blot analysis of HeLa cells using Actin Polyclonal Antibody



Western Blot analysis of K562 cells using Actin Polyclonal Antibody

---

Note: This product is for in vitro research use only