

Actin  $\alpha$ 1 Polyclonal Antibody

Catalog No: #40550

Package Size: #40550-1 50ul #40550-2 100ul

Orders: order@signalwayantibody.com

Support: tech@signalwayantibody.com

## Description

Product Name	Actin $\alpha$ 1 Polyclonal Antibody
Host Species	Rabbit
Clonality	Polyclonal
Purification	The antibody was affinity-purified from rabbit antiserum by affinity-chromatography using epitope-specific immunogen.
Applications	WB IHC ELISA
Species Reactivity	Hu Ms Rt
Specificity	Actin $\alpha$ 1 Polyclonal Antibody detects endogenous levels of Actin $\alpha$ 1 protein.
Immunogen Type	peptide
Immunogen Description	Synthesized peptide derived from the N-terminal region of human Actin $\alpha$ 1.
Target Name	Actin $\alpha$ 1
Other Names	ACTA1; ACTA; Actin; alpha skeletal muscle; Alpha-actin-1
Accession No.	Swiss-Prot: P68133NCBI Gene ID: 58
Uniprot	P68133
GeneID	58;
SDS-PAGE MW	45kd
Concentration	1mg/ml
Formulation	Liquid in PBS containing 50% glycerol, 0.5% BSA and 0.02% sodium azide.
Storage	Store at -20°C/1 year

## Application Details

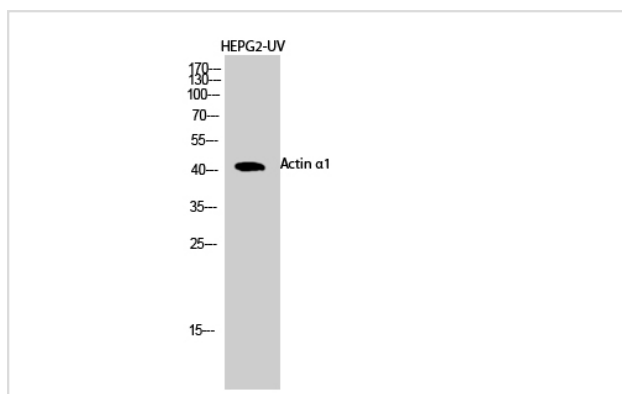
Western Blot: 1/500 - 1/2000.

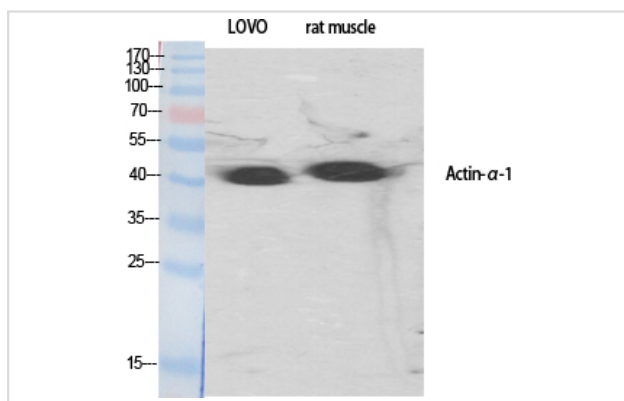
Immunohistochemistry: 1/100 - 1/300.

ELISA: 1/20000.

Not yet tested in other applications.

## Images

Western Blot analysis of HEPG2-UV cells using Actin  $\alpha$ 1 Polyclonal Antibody



Western Blot analysis of LOVO mouse-muscle cells using Actin  $\alpha$ 1 Polyclonal Antibody

---

Note: This product is for in vitro research use only