

Actin  $\alpha$ 3 Polyclonal Antibody

Catalog No: #40551

Package Size: #40551-1 50ul #40551-2 100ul

Orders: [order@signalwayantibody.com](mailto:order@signalwayantibody.com)Support: [tech@signalwayantibody.com](mailto:tech@signalwayantibody.com)

## Description

Product Name	Actin $\alpha$ 3 Polyclonal Antibody
Host Species	Rabbit
Clonality	Polyclonal
Purification	The antibody was affinity-purified from rabbit antiserum by affinity-chromatography using epitope-specific immunogen.
Applications	WB IHC IF ELISA
Species Reactivity	Hu Ms Rt
Specificity	Actin $\alpha$ 3 Polyclonal Antibody detects endogenous levels of Actin $\alpha$ 3 protein.
Immunogen Type	peptide
Immunogen Description	Synthesized peptide derived from the N-terminal region of human Actin $\alpha$ 3.
Target Name	Actin $\alpha$ 3
Other Names	ACTG2; ACTA3; ACTL3; ACTSG; Actin; gamma-enteric smooth muscle; Alpha-actin-3; Gamma-2-actin; Smooth muscle gamma-actin
Accession No.	Swiss-Prot: P63267NCBI Gene ID: 72
Uniprot	P63267
GeneID	72;
SDS-PAGE MW	45kd
Concentration	1mg/ml
Formulation	Liquid in PBS containing 50% glycerol, 0.5% BSA and 0.02% sodium azide.
Storage	Store at -20°C/1 year

## Application Details

Western Blot: 1/500 - 1/2000.

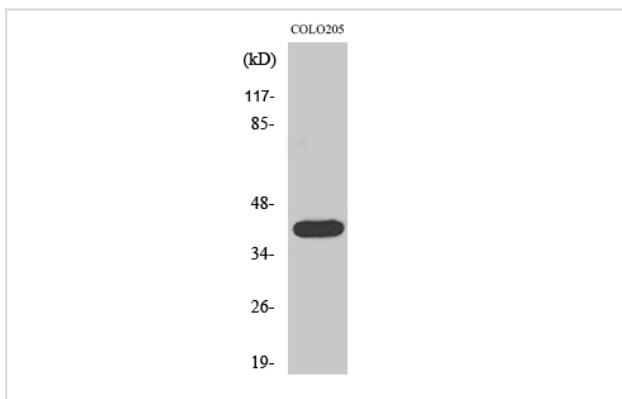
Immunohistochemistry: 1/100 - 1/300.

Immunofluorescence: 1/200 - 1/1000.

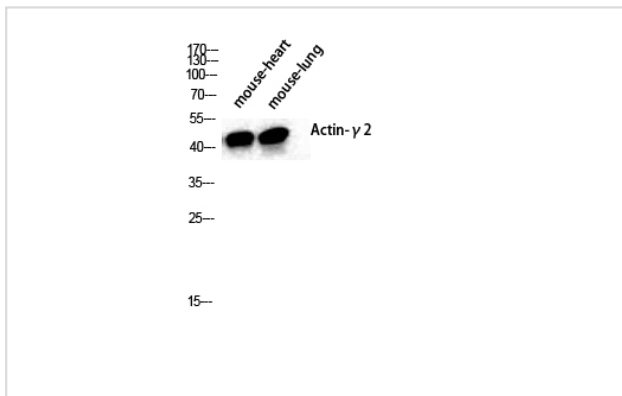
ELISA: 1/20000.

Not yet tested in other applications.

## Images



Western Blot analysis of COLO205 cells using Actin  $\alpha$ 3 Polyclonal Antibody



Western Blot analysis of mouse-heart mouse-lung cells using Actin  $\alpha$ 3 Polyclonal Antibody

Note: This product is for in vitro research use only