

ADH7 Polyclonal Antibody

Catalog No: #40556

Package Size: #40556-1 50ul #40556-2 100ul

Orders: order@signalwayantibody.com

Support: tech@signalwayantibody.com

Description

Product Name	ADH7 Polyclonal Antibody
Host Species	Rabbit
Clonality	Polyclonal
Purification	The antibody was affinity-purified from rabbit antiserum by affinity-chromatography using epitope-specific immunogen.
Applications	WB ELISA
Species Reactivity	Hu Mk
Specificity	ADH7 Polyclonal Antibody detects endogenous levels of ADH7 protein.
Immunogen Type	peptide
Immunogen Description	Synthesized peptide derived from the Internal region of human ADH7.
Target Name	ADH7
Other Names	ADH7; Alcohol dehydrogenase class 4 mu/sigma chain; Alcohol dehydrogenase class IV mu/sigma chain; Gastric alcohol dehydrogenase; Retinol dehydrogenase
Accession No.	Swiss-Prot: P40394NCBI Gene ID: 131
Uniprot	P40394
GeneID	131;
SDS-PAGE MW	40kd
Concentration	1mg/ml
Formulation	Liquid in PBS containing 50% glycerol, 0.5% BSA and 0.02% sodium azide.
Storage	Store at -20°C/1 year

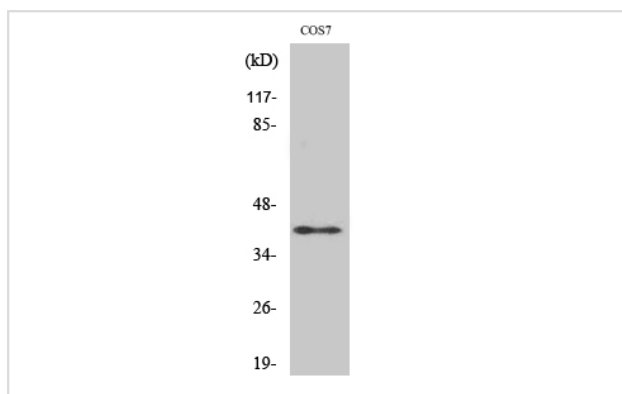
Application Details

Western Blot: 1/500 - 1/2000.

ELISA: 1/20000.

Not yet tested in other applications.

Images



Western Blot analysis of COS7 cells using ADH7 Polyclonal Antibody

Note: This product is for in vitro research use only