

## ALS2CR13 Polyclonal Antibody

Catalog No: #40584

Package Size: #40584-1 50ul #40584-2 100ul

Orders: order@signalwayantibody.com

Support: tech@signalwayantibody.com

## Description

Product Name	ALS2CR13 Polyclonal Antibody
Host Species	Rabbit
Clonality	Polyclonal
Purification	The antibody was affinity-purified from rabbit antiserum by affinity-chromatography using epitope-specific immunogen.
Applications	WB ELISA
Species Reactivity	Hu Ms
Specificity	ALS2CR13 Polyclonal Antibody detects endogenous levels of ALS2CR13 protein.
Immunogen Type	peptide
Immunogen Description	Synthesized peptide derived from the C-terminal region of human ALS2CR13.
Target Name	ALS2CR13
Other Names	FAM117B; ALS2CR13; Protein FAM117B; Amyotrophic lateral sclerosis 2 chromosomal region candidate gene 13 protein
Accession No.	Swiss-Prot: Q6P1L5NCBI Gene ID: 150864
Uniprot	Q6P1L5
GeneID	150864;
SDS-PAGE MW	60kd
Concentration	1mg/ml
Formulation	Liquid in PBS containing 50% glycerol, 0.5% BSA and 0.02% sodium azide.
Storage	Store at -20°C/1 year

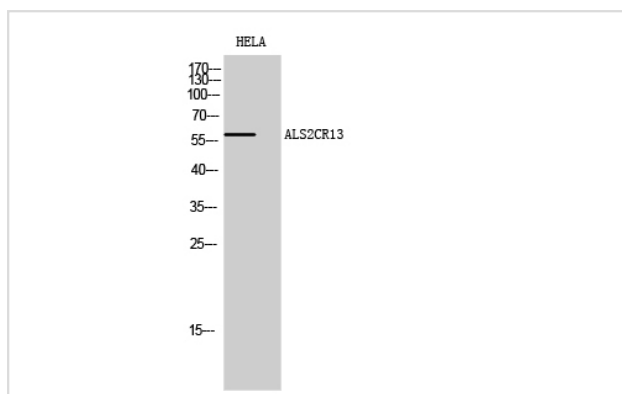
## Application Details

Western Blot: 1/500 - 1/2000.

ELISA: 1/5000.

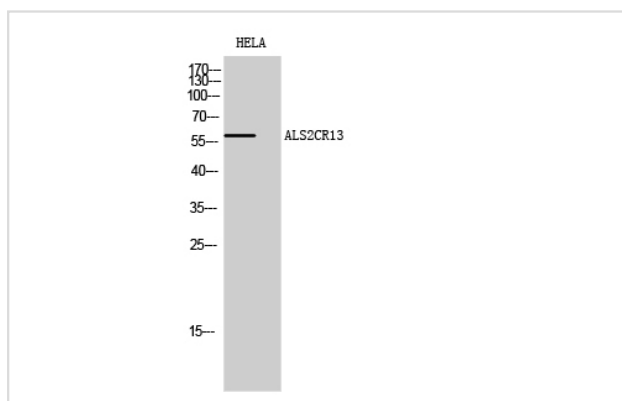
Not yet tested in other applications.

## Images



Western Blot analysis of HELA cells using ALS2CR13 Polyclonal Antibody

Western Blot analysis of HELA cells using ALS2CR13 Polyclonal Antibody



Note: This product is for in vitro research use only