

## ANKRD30A Polyclonal Antibody

Catalog No: #40589

Package Size: #40589-1 50ul #40589-2 100ul

Orders: [order@signalwayantibody.com](mailto:order@signalwayantibody.com)Support: [tech@signalwayantibody.com](mailto:tech@signalwayantibody.com)

## Description

Product Name	ANKRD30A Polyclonal Antibody
Host Species	Rabbit
Clonality	Polyclonal
Purification	The antibody was affinity-purified from rabbit antiserum by affinity-chromatography using epitope-specific immunogen.
Applications	WB IHC ELISA
Species Reactivity	Hu
Specificity	ANKRD30A Polyclonal Antibody detects endogenous levels of ANKRD30A protein.
Immunogen Type	peptide
Immunogen Description	Synthesized peptide derived from the C-terminal region of human ANKRD30A.
Target Name	ANKRD30A
Other Names	ANKRD30A; Ankyrin repeat domain-containing protein 30A; Serologically defined breast cancer antigen NY-BR-1
Accession No.	Swiss-Prot: Q9BXX3NCBI Gene ID: 91074
Uniprot	Q9BXX3
GeneID	91074;
SDS-PAGE MW	153kd
Concentration	1mg/ml
Formulation	Liquid in PBS containing 50% glycerol, 0.5% BSA and 0.02% sodium azide.
Storage	Store at -20°C/1 year

## Application Details

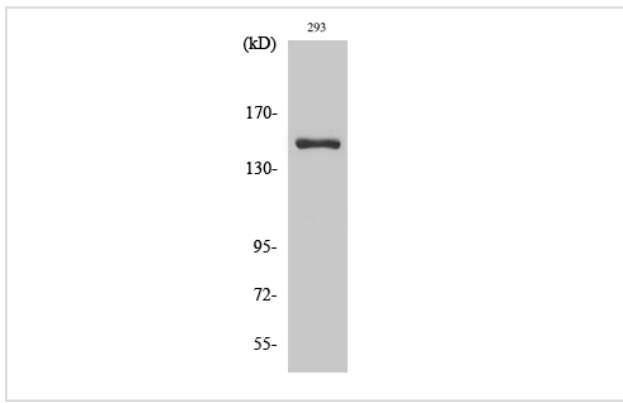
Western Blot: 1/500 - 1/2000.

Immunohistochemistry: 1/100 - 1/300.

ELISA: 1/5000.

Not yet tested in other applications.

## Images



Western Blot analysis of COLO205 cells using ANKRD30A Polyclonal Antibody

---

Note: This product is for in vitro research use only