

Annexin I Polyclonal Antibody

Catalog No: #40590

Package Size: #40590-1 50ul #40590-2 100ul

Orders: order@signalwayantibody.comSupport: tech@signalwayantibody.com

Description

Product Name	Annexin I Polyclonal Antibody
Host Species	Rabbit
Clonality	Polyclonal
Purification	The antibody was affinity-purified from rabbit antiserum by affinity-chromatography using epitope-specific immunogen.
Applications	WB IHC ELISA
Species Reactivity	Hu Ms Rt
Specificity	Annexin I Polyclonal Antibody detects endogenous levels of Annexin I protein.
Immunogen Type	peptide
Immunogen Description	Synthesized peptide derived from the Internal region of human Annexin I.
Target Name	Annexin I
Other Names	ANXA1; ANX1; LPC1; Annexin A1; Annexin I; Annexin-1; Calpactin II; Calpactin-2; Chromobindin-9; Lipocortin I; Phospholipase A2 inhibitory protein; p35
Accession No.	Swiss-Prot: P04083NCBI Gene ID: 301
Uniprot	P04083
GeneID	301;
SDS-PAGE MW	38kd
Concentration	1mg/ml
Formulation	Liquid in PBS containing 50% glycerol, 0.5% BSA and 0.02% sodium azide.
Storage	Store at -20°C/1 year

Application Details

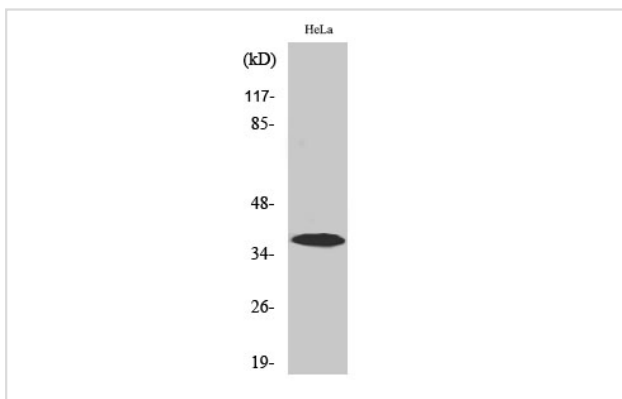
Western Blot: 1/500 - 1/2000.

Immunohistochemistry: 1/100 - 1/300. Immunocytochemistry: 1/200 - 1/1000.

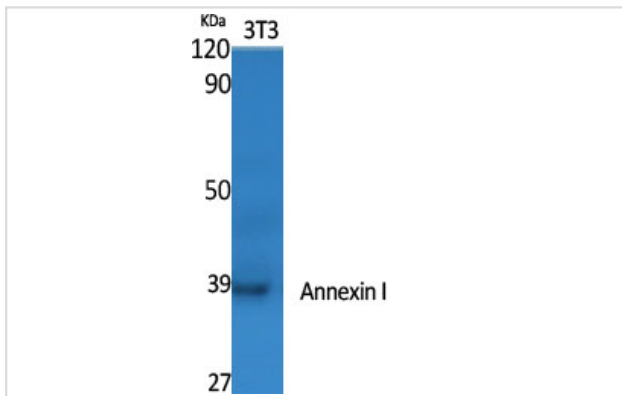
ELISA: 1/5000.

Not yet tested in other applications.

Images



Western Blot analysis of HeLa cells using Annexin I Polyclonal Antibody



Western Blot analysis of NIH-3T3 cells using Annexin I Polyclonal Antibody

Note: This product is for in vitro research use only