

## Annexin I Polyclonal Antibody

Catalog No: #40591

Package Size: #40591-1 50ul #40591-2 100ul

Orders: [order@signalwayantibody.com](mailto:order@signalwayantibody.com)Support: [tech@signalwayantibody.com](mailto:tech@signalwayantibody.com)

## Description

Product Name	Annexin I Polyclonal Antibody
Host Species	Rabbit
Clonality	Polyclonal
Purification	The antibody was affinity-purified from rabbit antiserum by affinity-chromatography using epitope-specific immunogen.
Applications	WB ELISA
Species Reactivity	Hu
Specificity	Annexin I Polyclonal Antibody detects endogenous levels of Annexin I protein.
Immunogen Type	peptide
Immunogen Description	Synthesized peptide derived from human Annexin I around the non-phosphorylation site of Y21.
Target Name	Annexin I
Other Names	ANXA1; ANX1; LPC1; Annexin A1; Annexin I; Annexin-1; Calpactin II; Calpactin-2; Chromobindin-9; Lipocortin I; Phospholipase A2 inhibitory protein; p35
Accession No.	Swiss-Prot: P04083NCBI Gene ID: 301
Uniprot	P04083
GeneID	301;
SDS-PAGE MW	38kd
Concentration	1mg/ml
Formulation	Liquid in PBS containing 50% glycerol, 0.5% BSA and 0.02% sodium azide.
Storage	Store at -20°C/1 year

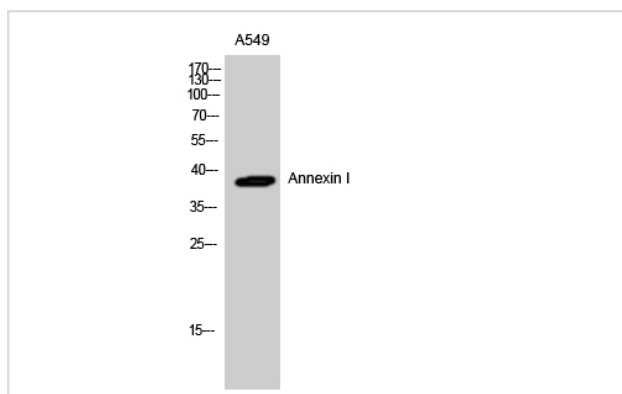
## Application Details

Western Blot: 1/500 - 1/2000.

ELISA: 1/10000.

Not yet tested in other applications.

## Images



Western Blot analysis of A549 cells using Annexin I Polyclonal Antibody

---

Note: This product is for in vitro research use only