

ANT4 Polyclonal Antibody

Catalog No: #40596

Package Size: #40596-1 50ul #40596-2 100ul

Orders: order@signalwayantibody.comSupport: tech@signalwayantibody.com

Description

Product Name	ANT4 Polyclonal Antibody
Host Species	Rabbit
Clonality	Polyclonal
Purification	The antibody was affinity-purified from rabbit antiserum by affinity-chromatography using epitope-specific immunogen.
Applications	WB IHC IF ELISA
Species Reactivity	Hu Ms
Specificity	ANT4 Polyclonal Antibody detects endogenous levels of ANT4 protein.
Immunogen Type	peptide
Immunogen Description	Synthesized peptide derived from the Internal region of human ANT4.
Target Name	ANT4
Other Names	SLC25A31; AAC4; ANT4; SFEC; ADP/ATP translocase 4; ADP; ATP carrier protein 4; Adenine nucleotide translocator 4; ANT 4; Solute carrier family 25 member 31; Sperm flagellar energy carrier protein
Accession No.	Swiss-Prot: Q9H0C2NCBI Gene ID: 83447
Uniprot	Q9H0C2
GeneID	83447;
SDS-PAGE MW	35kd
Concentration	1mg/ml
Formulation	Liquid in PBS containing 50% glycerol, 0.5% BSA and 0.02% sodium azide.
Storage	Store at -20°C/1 year

Application Details

Western Blot: 1/500 - 1/2000.

Immunohistochemistry: 1/100 - 1/300.

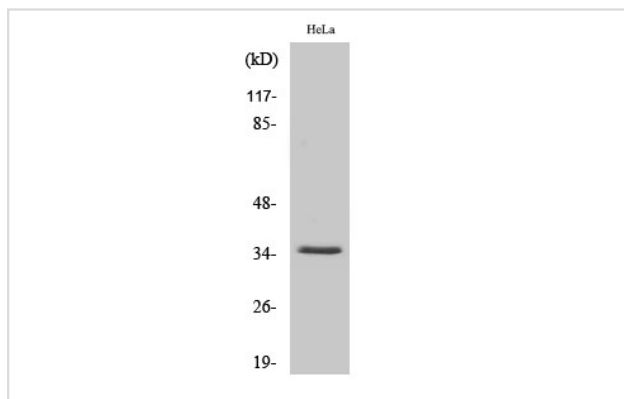
Immunofluorescence: 1/200 - 1/1000.

ELISA: 1/40000.

Not yet tested in other applications.

Images

Western Blot analysis of COLO205 cells using ANT4 Polyclonal Antibody



Note: This product is for in vitro research use only