

## AP-1 Polyclonal Antibody

Catalog No: #40599

Package Size: #40599-1 50ul #40599-2 100ul

Orders: [order@signalwayantibody.com](mailto:order@signalwayantibody.com)Support: [tech@signalwayantibody.com](mailto:tech@signalwayantibody.com)

## Description

|                       |  |
|-----------------------|--|
| Product Name          | AP-1 Polyclonal Antibody   |
| Host Species          | Rabbit   |
| Clonality             | Polyclonal   |
| Purification          | The antibody was affinity-purified from rabbit antiserum by affinity-chromatography using epitope-specific immunogen.              |
| Applications          | WB IHC IP ELISA  |
| Species Reactivity    | Hu Ms Rt   |
| Specificity           | AP-1 Polyclonal Antibody detects endogenous levels of AP-1 protein.  |
| Immunogen Type        | peptide  |
| Immunogen Description | Synthesized peptide derived from human AP-1 around the non-phosphorylation site of T91.  |
| Target Name           | AP-1   |
| Other Names           | JUN; Transcription factor AP-1; Activator protein 1; AP1; Proto-oncogene c-Jun; V-jun avian sarcoma virus 17 oncogene homolog; p39 |
| Accession No.         | Swiss-Prot: P05412NCBI Gene ID: 3725   |
| Uniprot               | P05412   |
| GeneID                | 3725;  |
| SDS-PAGE MW           | 38kd   |
| Concentration         | 1mg/ml   |
| Formulation           | Liquid in PBS containing 50% glycerol, 0.5% BSA and 0.02% sodium azide.  |
| Storage               | Store at -20°C/1 year  |

## Application Details

Western Blot: 1/500 - 1/2000.

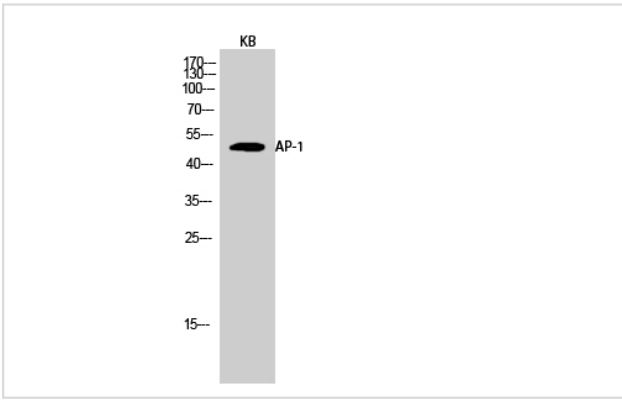
Immunohistochemistry: 1/100 - 1/300. Immunoprec

Immunoprecipitation: 2-5 ug/mg lysate.

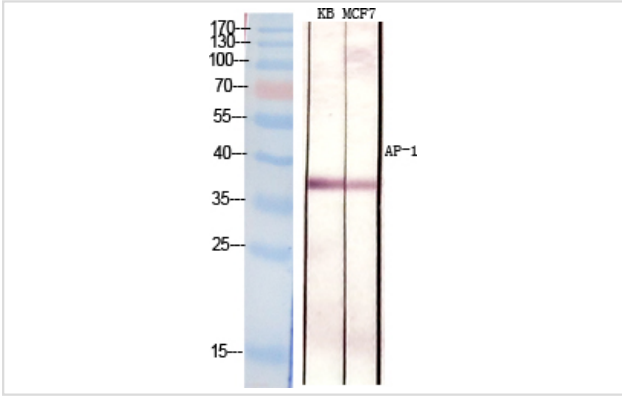
ELISA: 1/20000.

Not yet tested in other applications.

## Images



Western Blot analysis of KB cells using AP-1 Polyclonal Antibody



Western Blot analysis of KB MCF7 cells using AP-1 Polyclonal Antibody

Note: This product is for in vitro research use only