

## API5 Polyclonal Antibody

Catalog No: #40602

Package Size: #40602-1 50ul #40602-2 100ul

Orders: [order@signalwayantibody.com](mailto:order@signalwayantibody.com)Support: [tech@signalwayantibody.com](mailto:tech@signalwayantibody.com)

## Description

Product Name	API5 Polyclonal Antibody
Host Species	Rabbit
Clonality	Polyclonal
Purification	The antibody was affinity-purified from rabbit antiserum by affinity-chromatography using epitope-specific immunogen.
Applications	WB IHC ELISA
Species Reactivity	Hu Ms
Specificity	API5 Polyclonal Antibody detects endogenous levels of API5 protein.
Immunogen Type	peptide
Immunogen Description	Synthesized peptide derived from the C-terminal region of human API5.
Target Name	API5
Other Names	API5; MIG8; Apoptosis inhibitor 5; API-5; Antiapoptosis clone 11 protein; AAC-11; Cell migration-inducing gene 8 protein; Fibroblast growth factor 2-interacting factor; FIF; Protein XAGL
Accession No.	Swiss-Prot: Q9BZZ5NCBI Gene ID: 8539
Uniprot	Q9BZZ5
GeneID	8539;
SDS-PAGE MW	58kd
Concentration	1mg/ml
Formulation	Liquid in PBS containing 50% glycerol, 0.5% BSA and 0.02% sodium azide.
Storage	Store at -20°C/1 year

## Application Details

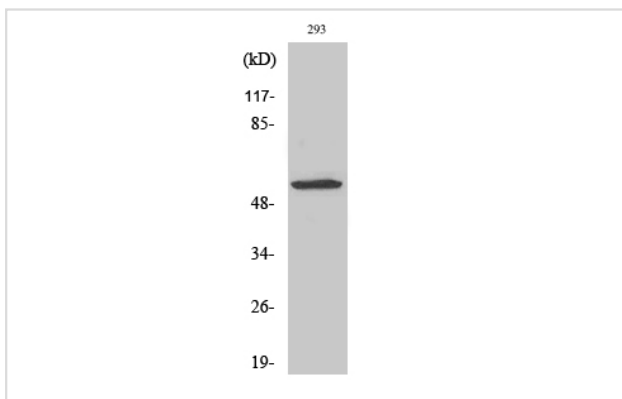
Western Blot: 1/500 - 1/2000.

Immunohistochemistry: 1/100 - 1/300.

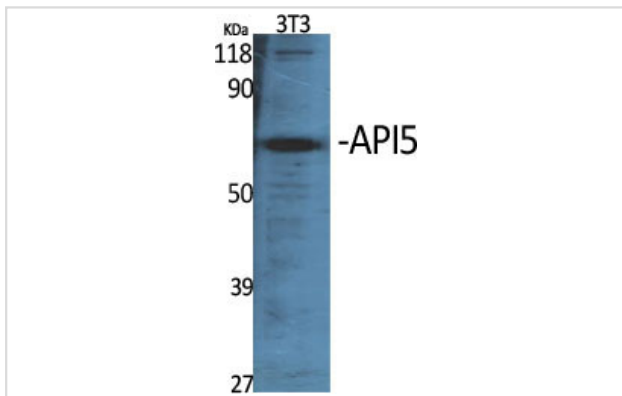
ELISA: 1/20000.

Not yet tested in other applications.

## Images



Western Blot analysis of HuvEc cells using API5 Polyclonal Antibody



Western Blot analysis of NIH-3T3 cells using API5 Polyclonal Antibody

---

Note: This product is for in vitro research use only