

## APRIL Polyclonal Antibody

Catalog No: #40607

Package Size: #40607-1 50ul #40607-2 100ul

Orders: [order@signalwayantibody.com](mailto:order@signalwayantibody.com)Support: [tech@signalwayantibody.com](mailto:tech@signalwayantibody.com)

## Description

Product Name	APRIL Polyclonal Antibody
Host Species	Rabbit
Clonality	Polyclonal
Purification	The antibody was affinity-purified from rabbit antiserum by affinity-chromatography using epitope-specific immunogen.
Applications	WB IHC IF ELISA
Species Reactivity	Hu Ms Rt
Specificity	APRIL Polyclonal Antibody detects endogenous levels of APRIL protein.
Immunogen Type	peptide
Immunogen Description	Synthesized peptide derived from the Internal region of human APRIL.
Target Name	APRIL
Other Names	TNFSF13; APRIL; TALL2; ZTNF2; Tumor necrosis factor ligand superfamily member 13; A proliferation-inducing ligand; APRIL; TNF- and APOL-related leukocyte expressed ligand 2; TALL-2; TNF-related death ligand 1; TRDL-1; CD antigen CD256
Accession No.	Swiss-Prot: O75888NCBI Gene ID: 8741
Uniprot	O75888
GeneID	8741;
SDS-PAGE MW	23kd
Concentration	1mg/ml
Formulation	Liquid in PBS containing 50% glycerol, 0.5% BSA and 0.02% sodium azide.
Storage	Store at -20°C/1 year

## Application Details

Western Blot: 1/500 - 1/2000.

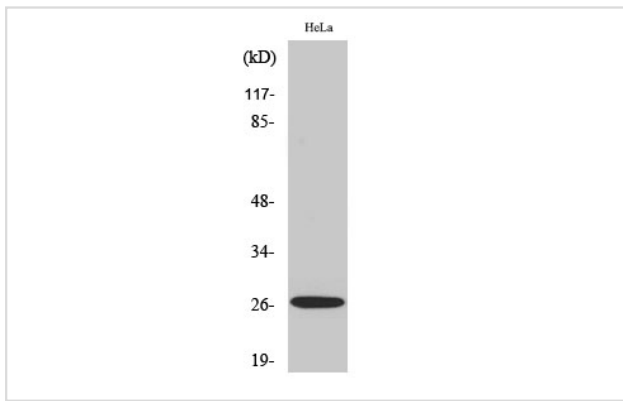
Immunohistochemistry: 1/100 - 1/300.

Immunofluorescence: 1/200 - 1/1000.

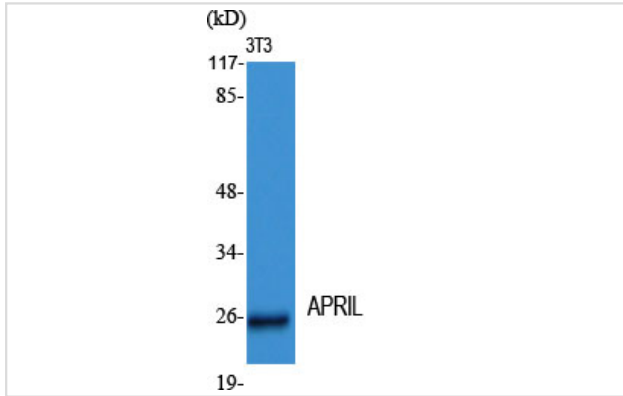
ELISA: 1/10000.

Not yet tested in other applications.

## Images



Western Blot analysis of COLO205 cells using APRIL Polyclonal Antibody



Western Blot analysis of NIH-3T3 cells using APRIL Polyclonal Antibody

---

Note: This product is for in vitro research use only