

AR Polyclonal Antibody

Catalog No: #40609

Package Size: #40609-1 50ul #40609-2 100ul

Orders: order@signalwayantibody.comSupport: tech@signalwayantibody.com

Description

Product Name	AR Polyclonal Antibody
Host Species	Rabbit
Clonality	Polyclonal
Purification	The antibody was affinity-purified from rabbit antiserum by affinity-chromatography using epitope-specific immunogen.
Applications	WB IHC ELISA
Species Reactivity	Hu
Specificity	AR Polyclonal Antibody detects endogenous levels of AR protein.
Immunogen Type	peptide
Immunogen Description	Synthesized peptide derived from human AR around the non-phosphorylation site of S650.
Target Name	AR
Other Names	AR; DHTR; NR3C4; Androgen receptor; Dihydrotestosterone receptor; Nuclear receptor subfamily 3 group C member 4
Accession No.	Swiss-Prot: P10275NCBI Gene ID: 367
Uniprot	P10275
GeneID	367;
SDS-PAGE MW	99kd
Concentration	1mg/ml
Formulation	Liquid in PBS containing 50% glycerol, 0.5% BSA and 0.02% sodium azide.
Storage	Store at -20°C/1 year

Application Details

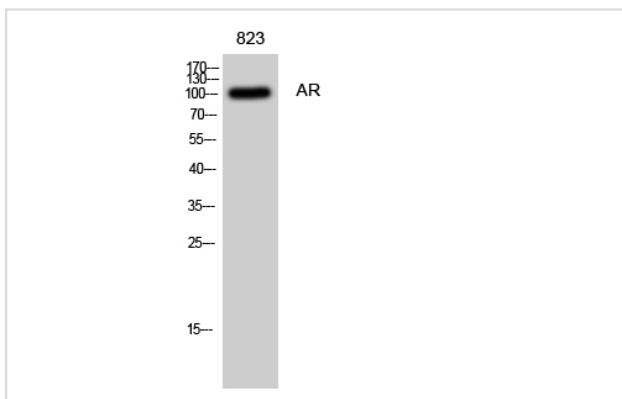
Western Blot: 1/500 - 1/2000.

Immunohistochemistry: 1/100 - 1/300.

ELISA: 1/40000.

Not yet tested in other applications.

Images



Western Blot analysis of 823 cells using AR Polyclonal Antibody

Note: This product is for in vitro research use only