

ARMCX1 Polyclonal Antibody

Catalog No: #40612

Package Size: #40612-1 50ul #40612-2 100ul

Orders: order@signalwayantibody.comSupport: tech@signalwayantibody.com

Description

Product Name	ARMCX1 Polyclonal Antibody
Host Species	Rabbit
Clonality	Polyclonal
Purification	The antibody was affinity-purified from rabbit antiserum by affinity-chromatography using epitope-specific immunogen.
Applications	WB IHC IF
Species Reactivity	Hu
Specificity	ARMCX1 Polyclonal Antibody detects endogenous levels of ARMCX1 protein.
Immunogen Type	peptide
Immunogen Description	Synthesized peptide derived from the N-terminal region of human ARMCX1.
Target Name	ARMCX1
Other Names	ARMCX1; ALEX1; AD032; Armadillo repeat-containing X-linked protein 1; ARM protein lost in epithelial cancers on chromosome X 1; Protein ALEX1
Accession No.	Swiss-Prot: Q9P291NCBI Gene ID: 51309
Uniprot	Q9P291
GeneID	51309;
SDS-PAGE MW	49kd
Concentration	1mg/ml
Formulation	Liquid in PBS containing 50% glycerol, 0.5% BSA and 0.02% sodium azide.
Storage	Store at -20°C/1 year

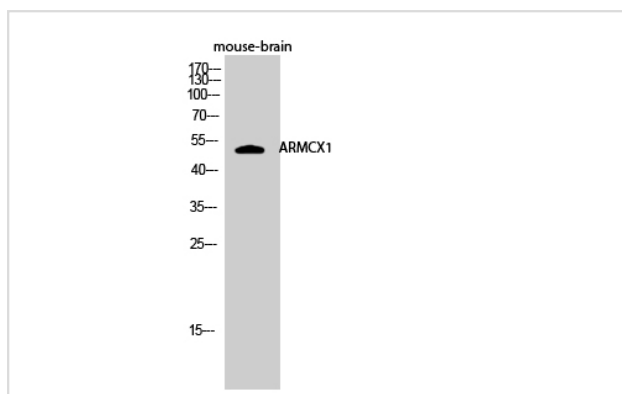
Application Details

Western Blot: 1/500 - 1/2000.

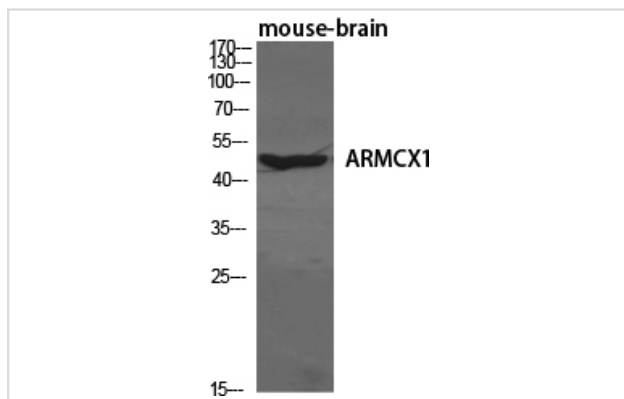
Immunohistochemistry: 1/100 - 1/300.

Immunofluorescence: 1/200 - 1/1000.

Images



Western Blot analysis of mouse-brain cells using ARMCX1 Polyclonal Antibody



Western Blot analysis of MOUSE-BRAIN cells using ARM CX1 Polyclonal Antibody

Note: This product is for in vitro research use only