

ARMCX2 Polyclonal Antibody

Catalog No: #40613

Package Size: #40613-1 50ul #40613-2 100ul

Orders: order@signalwayantibody.com

Support: tech@signalwayantibody.com

Description

Product Name	ARMCX2 Polyclonal Antibody
Host Species	Rabbit
Clonality	Polyclonal
Purification	The antibody was affinity-purified from rabbit antiserum by affinity-chromatography using epitope-specific immunogen.
Applications	WB IHC IF
Species Reactivity	Rt
Specificity	ARMCX2 Polyclonal Antibody detects endogenous levels of ARM CX2 protein.
Immunogen Description	Synthesized peptide derived from the Internal region of human ARM CX2.
Target Name	ARM CX2
Other Names	ARM CX2; ALEX2; KIAA0512; Armadillo repeat-containing X-linked protein 2; ARM protein lost in epithelial cancers on chromosome X 2; Protein ALEX2
Accession No.	Swiss-Prot: Q7L311NCBI Gene ID: 9823
Uniprot	Q7L311
GeneID	9823;
SDS-PAGE MW	65kd
Concentration	1mg/ml
Formulation	Liquid in PBS containing 50% glycerol, 0.5% BSA and 0.02% sodium azide.
Storage	Store at -20°C/1 year

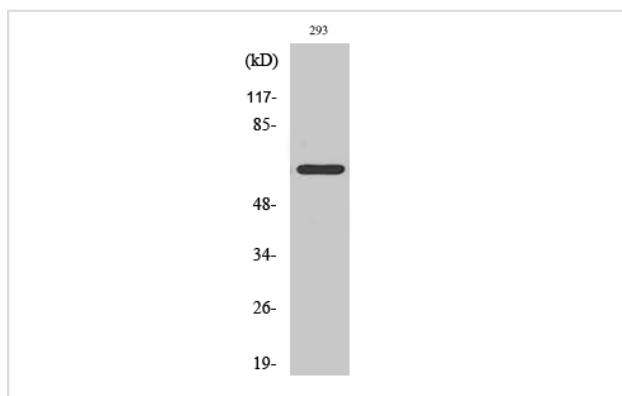
Application Details

Western Blot: 1/500 - 1/2000.

Immunohistochemistry: 1/100 - 1/300.

Immunofluorescence: 1/200 - 1/1000.

Images



Western Blot analysis of 293 cells using ARM CX2 Polyclonal Antibody

Note: This product is for in vitro research use only