

ARPP-21 Polyclonal Antibody

Catalog No: #40614

Package Size: #40614-1 50ul #40614-2 100ul

Orders: order@signalwayantibody.comSupport: tech@signalwayantibody.com

Description

Product Name	ARPP-21 Polyclonal Antibody
Host Species	Rabbit
Clonality	Polyclonal
Purification	The antibody was affinity-purified from rabbit antiserum by affinity-chromatography using epitope-specific immunogen.
Applications	WB IHC ELISA
Species Reactivity	Hu Ms
Specificity	ARPP-21 Polyclonal Antibody detects endogenous levels of ARPP-21 protein.
Immunogen Type	peptide
Immunogen Description	Synthesized peptide derived from the Internal region of human ARPP-21.
Target Name	ARPP-21
Other Names	ARPP21; TARPP; cAMP-regulated phosphoprotein 21; ARPP-21; Thymocyte cAMP-regulated phosphoprotein
Accession No.	Swiss-Prot: Q9UBL0NCBI Gene ID: 10777
Uniprot	Q9UBL0
GeneID	10777;
SDS-PAGE MW	80kd
Concentration	1mg/ml
Formulation	Liquid in PBS containing 50% glycerol, 0.5% BSA and 0.02% sodium azide.
Storage	Store at -20°C/1 year

Application Details

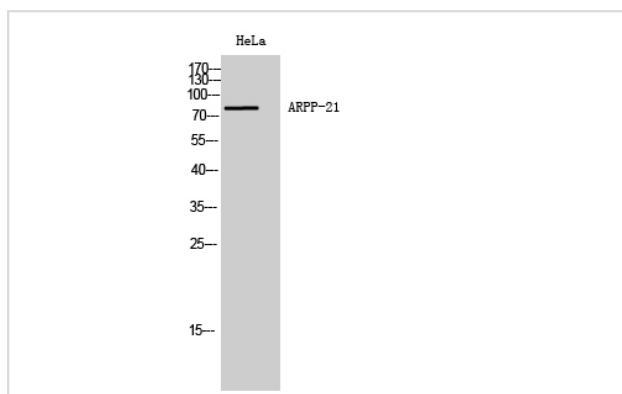
Western Blot: 1/500 - 1/2000.

Immunohistochemistry: 1/100 - 1/300.

ELISA: 1/5000.

Not yet tested in other applications.

Images



Western Blot analysis of HeLa cells using ARPP-21 Polyclonal Antibody

Note: This product is for in vitro research use only