

Arrdc1 Polyclonal Antibody

Catalog No: #40615

Package Size: #40615-1 50ul #40615-2 100ul

Orders: order@signalwayantibody.comSupport: tech@signalwayantibody.com

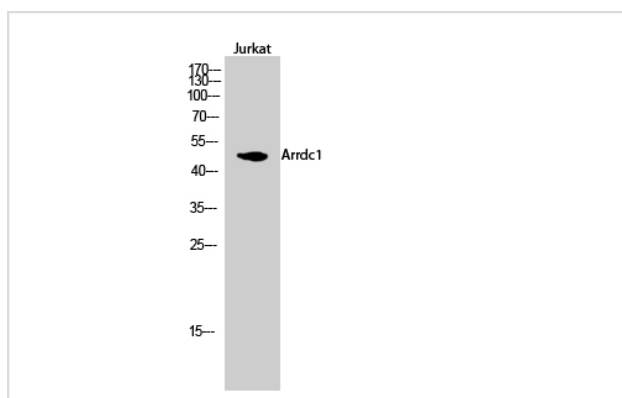
Description

| | |
|-----------------------|---|
| Product Name | Arrdc1 Polyclonal Antibody |
| Host Species | Rabbit |
| Clonality | Polyclonal |
| Purification | The antibody was affinity-purified from rabbit antiserum by affinity-chromatography using epitope-specific immunogen. |
| Applications | WB |
| Species Reactivity | Hu Ms Rt |
| Specificity | Arrdc1 Polyclonal Antibody detects endogenous levels of Arrdc1 protein. |
| Immunogen Type | peptide |
| Immunogen Description | Synthesized peptide derived from the Internal region of human Arrdc1. |
| Target Name | Arrdc1 |
| Other Names | ARRDC1; Arrestin domain-containing protein 1 |
| Accession No. | Swiss-Prot: Q8N5I2NCBI Gene ID: 92714 |
| Uniprot | Q8N5I2 |
| GeneID | 92714; |
| SDS-PAGE MW | 48kd |
| Concentration | 1mg/ml |
| Formulation | Liquid in PBS containing 50% glycerol, 0.5% BSA and 0.02% sodium azide. |
| Storage | Store at -20°C/1 year |

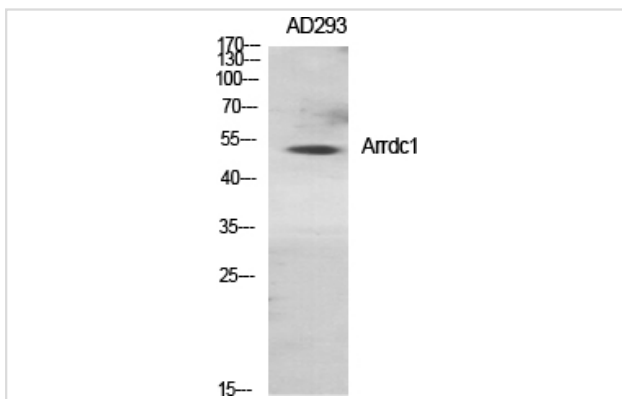
Application Details

Western Blot: 1/500 - 1/2000.

Images



Western Blot analysis of Jurkat cells using Arrdc1 Polyclonal Antibody



Western Blot analysis of AD293 cells using Arrdc1 Polyclonal Antibody

Note: This product is for in vitro research use only