

## AR-β2 Polyclonal Antibody

Catalog No: #40616

Package Size: #40616-1 50ul #40616-2 100ul

Orders: [order@signalwayantibody.com](mailto:order@signalwayantibody.com)Support: [tech@signalwayantibody.com](mailto:tech@signalwayantibody.com)

## Description

Product Name	AR-β2 Polyclonal Antibody
Host Species	Rabbit
Clonality	Polyclonal
Purification	The antibody was affinity-purified from rabbit antiserum by affinity-chromatography using epitope-specific immunogen.
Applications	WB IHC IF ELISA
Species Reactivity	Hu Ms Rt
Specificity	AR-β2 Polyclonal Antibody detects endogenous levels of AR-β2 protein.
Immunogen Type	peptide
Immunogen Description	Synthesized peptide derived from the Internal region of human AR-β2.
Target Name	AR-β2
Other Names	ADRB2; ADRB2R; B2AR; Beta-2 adrenergic receptor; Beta-2 adrenoreceptor; Beta-2 adrenoceptor
Accession No.	Swiss-Prot: P07550NCBI Gene ID: 154
Uniprot	P07550
GeneID	154;
SDS-PAGE MW	62kd
Concentration	1mg/ml
Formulation	Liquid in PBS containing 50% glycerol, 0.5% BSA and 0.02% sodium azide.
Storage	Store at -20°C/1 year

## Application Details

Western Blot: 1/500 - 1/2000.

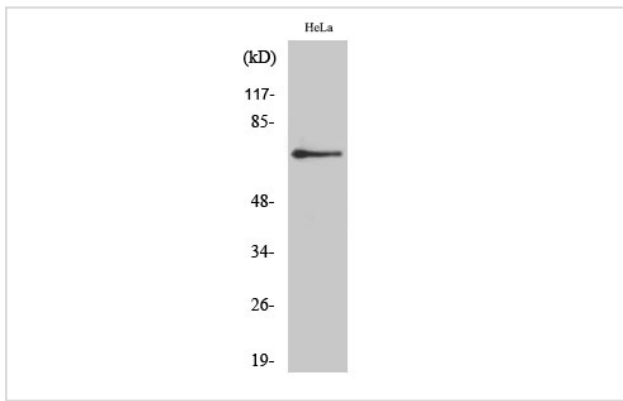
Immunohistochemistry: 1/100 - 1/300.

Immunofluorescence: 1/200 - 1/1000.

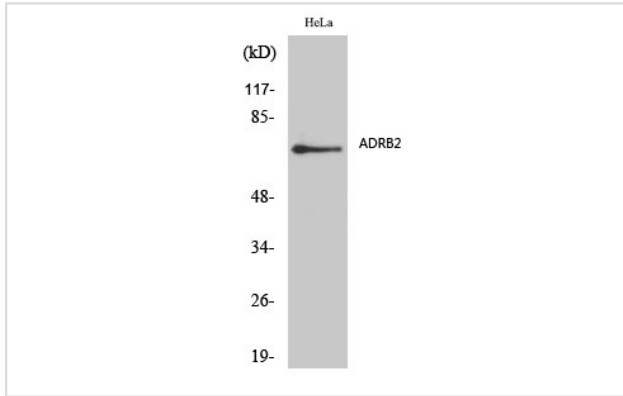
ELISA: 1/20000.

Not yet tested in other applications.

## Images



Western Blot analysis of HeLa cells using AR- $\beta$ 2 Polyclonal Antibody



Western Blot analysis of HELA cells using AR- $\beta$ 2 Polyclonal Antibody

---

Note: This product is for in vitro research use only