

ATF-3 Polyclonal Antibody

Catalog No: #40625

Package Size: #40625-1 50ul #40625-2 100ul

Orders: order@signalwayantibody.comSupport: tech@signalwayantibody.com

Description

Product Name	ATF-3 Polyclonal Antibody
Host Species	Rabbit
Clonality	Polyclonal
Purification	The antibody was affinity-purified from rabbit antiserum by affinity-chromatography using epitope-specific immunogen.
Applications	WB IHC ELISA
Species Reactivity	Hu Ms Rt
Specificity	ATF-3 Polyclonal Antibody detects endogenous levels of ATF-3 protein.
Immunogen Type	peptide
Immunogen Description	Synthesized peptide derived from the C-terminal region of human ATF-3.
Target Name	ATF-3
Other Names	ATF3; Cyclic AMP-dependent transcription factor ATF-3; cAMP-dependent transcription factor ATF-3; Activating transcription factor 3
Accession No.	Swiss-Prot: P18847NCBI Gene ID: 467
Uniprot	P18847
GeneID	467;
SDS-PAGE MW	21kd
Concentration	1mg/ml
Formulation	Liquid in PBS containing 50% glycerol, 0.5% BSA and 0.02% sodium azide.
Storage	Store at -20°C/1 year

Application Details

Western Blot: 1/500 - 1/2000.

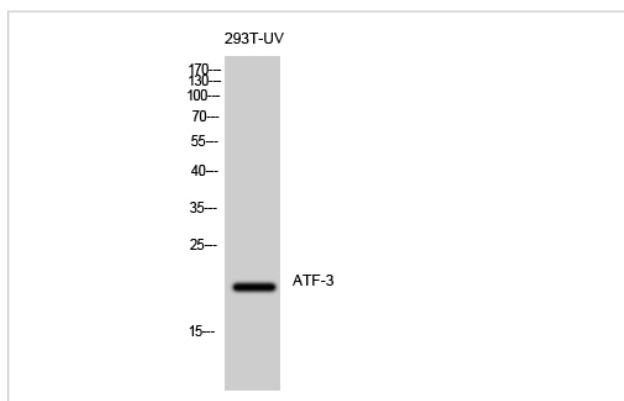
Immunohistochemistry: 1/100 - 1/300.

ELISA: 1/5000.

Not yet tested in other applications.

Images

Western Blot analysis of 293T-UV cells using ATF-3 Polyclonal Antibody



Note: This product is for in vitro research use only