

ATP5H Polyclonal Antibody

Catalog No: #40629

Package Size: #40629-1 50ul #40629-2 100ul

Orders: order@signalwayantibody.com

Support: tech@signalwayantibody.com

Description

Product Name	ATP5H Polyclonal Antibody
Host Species	Rabbit
Clonality	Polyclonal
Purification	The antibody was affinity-purified from rabbit antiserum by affinity-chromatography using epitope-specific immunogen.
Applications	WB IHC ELISA
Species Reactivity	Hu Ms Rt
Specificity	ATP5H Polyclonal Antibody detects endogenous levels of ATP5H protein.
Immunogen Type	peptide
Immunogen Description	Synthesized peptide derived from the C-terminal region of human ATP5H.
Target Name	ATP5H
Other Names	ATP5H; My032; ATP synthase subunit d; mitochondrial; ATPase subunit d
Accession No.	Swiss-Prot: O75947NCBI Gene ID: 10476
Uniprot	O75947
GeneID	10476;
SDS-PAGE MW	26kd
Concentration	1mg/ml
Formulation	Liquid in PBS containing 50% glycerol, 0.5% BSA and 0.02% sodium azide.
Storage	Store at -20°C/1 year

Application Details

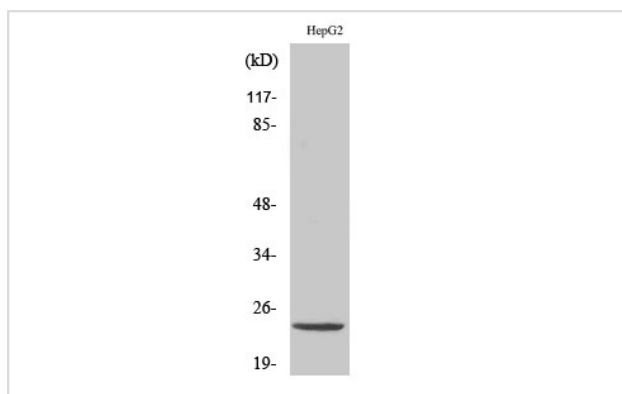
Western Blot: 1/500 - 1/2000.

Immunohistochemistry: 1/100 - 1/300.

ELISA: 1/20000.

Not yet tested in other applications.

Images



Western Blot analysis of Jurkat cells using ATP5H Polyclonal Antibody

Note: This product is for in vitro research use only