

ATP-citrate synthase Polyclonal Antibody

Catalog No: #40630

Package Size: #40630-1 50ul #40630-2 100ul

Orders: order@signalwayantibody.comSupport: tech@signalwayantibody.com

Description

Product Name	ATP-citrate synthase Polyclonal Antibody
Host Species	Rabbit
Clonality	Polyclonal
Purification	The antibody was affinity-purified from rabbit antiserum by affinity-chromatography using epitope-specific immunogen.
Applications	WB IF ELISA
Species Reactivity	Hu Ms Rt Mk
Specificity	ATP-citrate synthase Polyclonal Antibody detects endogenous levels of ATP-citrate synthase protein.
Immunogen Type	peptide
Immunogen Description	Synthesized peptide derived from human ATP-citrate synthase around the non-phosphorylation site of S455.
Target Name	ATP-citrate synthase
Other Names	ACLY; ATP-citrate synthase; ATP-citrate; pro-S-)lyase; ACL; Citrate cleavage enzyme
Accession No.	Swiss-Prot: P53396NCBI Gene ID: 47
Uniprot	P53396
GeneID	47;
SDS-PAGE MW	120kd
Concentration	1mg/ml
Formulation	Liquid in PBS containing 50% glycerol, 0.5% BSA and 0.02% sodium azide.
Storage	Store at -20°C/1 year

Application Details

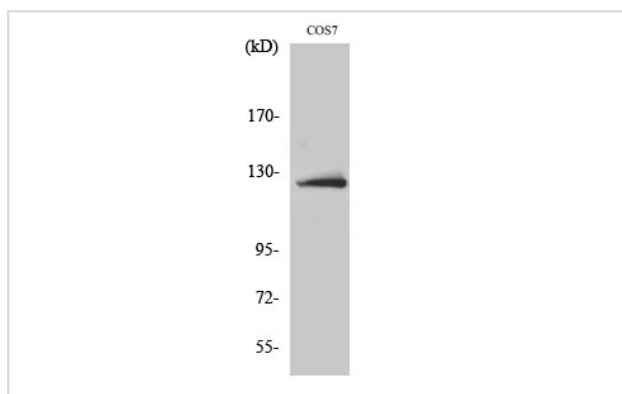
Western Blot: 1/500 - 1/2000.

Immunofluorescence: 1/200 - 1/1000.

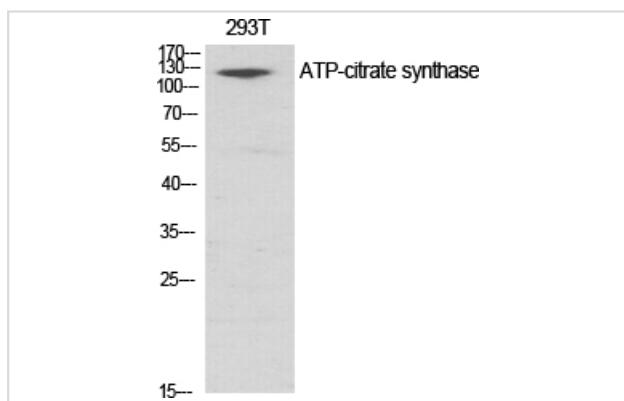
ELISA: 1/10000.

Not yet tested in other applications.

Images



Western Blot analysis of COS7 cells using ATP-citrate synthase Polyclonal Antibody



Western Blot analysis of 293T cells using ATP-citrate synthase Polyclonal Antibody

Note: This product is for in vitro research use only