

Muellerian-inhibiting factor

Catalog No: #AP78452

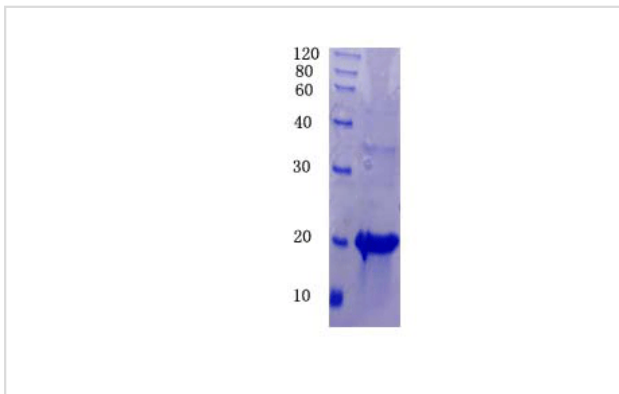
Package Size: #AP78452-1 50ug #AP78452-2 100ug #AP78452-3 1mg

Orders: order@signalwayantibody.comSupport: tech@signalwayantibody.com

Description

Product Name	Muellerian-inhibiting factor
Brief Description	Recombinant Protein
Host Species	E.coli
Purification	Greater than 90% by SDS-PAGE
Species Reactivity	Human
Immunogen Description	45-154AA
Other Names	MIF, Anti-Muellerian hormone, Muellerian-inhibiting substance, AMH, MIS
Accession No.	P03971 Gene name: AMH
Uniprot	P03971
GeneID	268;
Calculated MW	12.1
Tag Info	His
Formulation	50mM NaH ₂ PO ₄ , 500mM NaCl Buffer with 500mM Imidazole, 10% glycerol (PH8.0)
Storage	Store at -20C. (Avoid repeated freezing and thawing.) Repeated freezing and thawing is not recommended. Store working aliquots at 4°C for up to one week.

Images



Background

This glycoprotein, produced by the Sertoli cells of the testis, causes regression of the Muellerian duct. It is also able to inhibit the growth of tumors derived from tissues of Muellerian duct origin.

References

Repeated freezing and thawing is not recommended. Store working aliquots at 4°C for up to one week.

Note: This product is for in vitro research use only