

## Bak Polyclonal Antibody

Catalog No: #40633

Package Size: #40633-1 50ul #40633-2 100ul

Orders: [order@signalwayantibody.com](mailto:order@signalwayantibody.com)Support: [tech@signalwayantibody.com](mailto:tech@signalwayantibody.com)

## Description

|                       |   |
|-----------------------|---|
| Product Name          | Bak Polyclonal Antibody   |
| Host Species          | Rabbit  |
| Clonality             | Polyclonal  |
| Purification          | The antibody was affinity-purified from rabbit antiserum by affinity-chromatography using epitope-specific immunogen. |
| Applications          | WB IHC IF ELISA   |
| Species Reactivity    | Hu Ms   |
| Specificity           | Bak Polyclonal Antibody detects endogenous levels of Bak protein.   |
| Immunogen Type        | peptide   |
| Immunogen Description | Synthesized peptide derived from the N-terminal region of human Bak.  |
| Target Name           | Bak   |
| Other Names           | BAK1; BAK; BCL2L7; CDN1; Bcl-2 homologous antagonist/killer; Apoptosis regulator BAK; Bcl-2-like protein 7; Bcl2-L-7  |
| Accession No.         | Swiss-Prot: Q16611NCBI Gene ID: 578   |
| Uniprot               | Q16611  |
| GeneID                | 578;  |
| SDS-PAGE MW           | 25kd  |
| Concentration         | 1mg/ml  |
| Formulation           | Liquid in PBS containing 50% glycerol, 0.5% BSA and 0.02% sodium azide.   |
| Storage               | Store at -20°C/1 year   |

## Application Details

Western Blot: 1/500 - 1/2000.

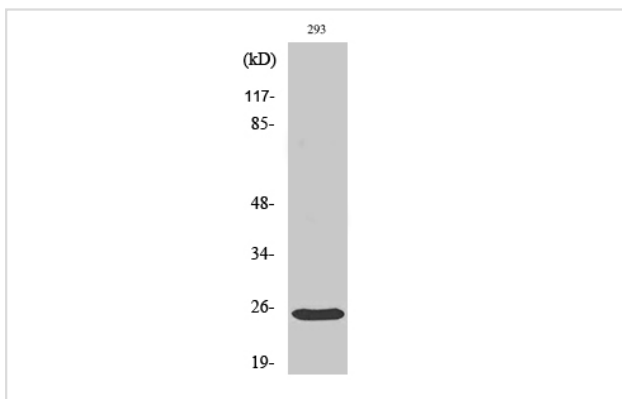
Immunohistochemistry: 1/100 - 1/300.

Immunofluorescence: 1/200 - 1/1000.

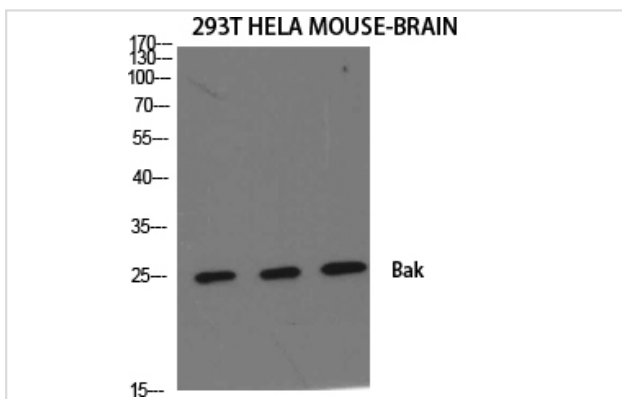
ELISA: 1/10000.

Not yet tested in other applications.

## Images



Western Blot analysis of 293 cells using Bak Polyclonal Antibody



Western Blot analysis of 293T HELA MOUSE-BRAIN cells using Bak Polyclonal Antibody

---

Note: This product is for in vitro research use only