

## BAP31 Polyclonal Antibody

Catalog No: #40634

Package Size: #40634-1 50ul #40634-2 100ul

Orders: [order@signalwayantibody.com](mailto:order@signalwayantibody.com)Support: [tech@signalwayantibody.com](mailto:tech@signalwayantibody.com)

## Description

Product Name	BAP31 Polyclonal Antibody
Host Species	Rabbit
Clonality	Polyclonal
Purification	The antibody was affinity-purified from rabbit antiserum by affinity-chromatography using epitope-specific immunogen.
Applications	WB ELISA
Species Reactivity	Hu Ms Rt
Specificity	BAP31 Polyclonal Antibody detects endogenous levels of BAP31 protein.
Immunogen Type	peptide
Immunogen Description	Synthesized peptide derived from the Internal region of human BAP31.
Target Name	BAP31
Other Names	BCAP31; BAP31; DXS1357E; B-cell receptor-associated protein 31; BCR-associated protein 31; Bap31; 6C6-AG tumor-associated antigen; Protein CDM; p28
Accession No.	Swiss-Prot: P51572NCBI Gene ID: 10134
Uniprot	P51572
GeneID	10134;
SDS-PAGE MW	28kd
Concentration	1mg/ml
Formulation	Liquid in PBS containing 50% glycerol, 0.5% BSA and 0.02% sodium azide.
Storage	Store at -20°C/1 year

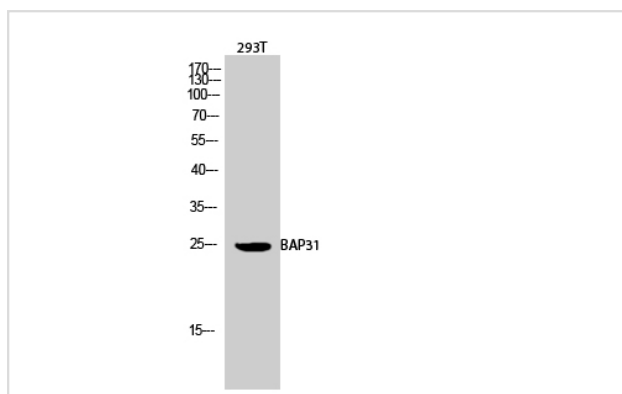
## Application Details

Western Blot: 1/500 - 1/2000.

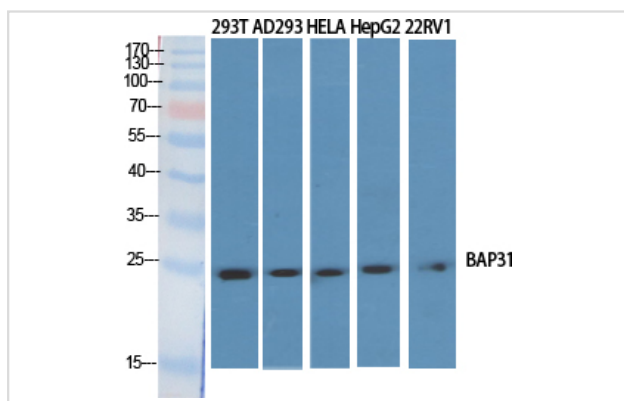
ELISA: 1/40000.

Not yet tested in other applications.

## Images



Western Blot analysis of 293T cells using BAP31 Polyclonal Antibody



Western Blot analysis of 293T AD293 22RV1 HELA HepG2 cells using BAP31 Polyclonal Antibody

Note: This product is for in vitro research use only