

Bax Polyclonal Antibody

Catalog No: #40635

Package Size: #40635-1 50ul #40635-2 100ul

Orders: order@signalwayantibody.comSupport: tech@signalwayantibody.com

Description

| | |
|-----------------------|-----------------------------------------------------------------------------------------------------------------------|
| Product Name | Bax Polyclonal Antibody |
| Host Species | Rabbit |
| Clonality | Polyclonal |
| Purification | The antibody was affinity-purified from rabbit antiserum by affinity-chromatography using epitope-specific immunogen. |
| Applications | WB IHC IF ELISA |
| Species Reactivity | Hu Ms Rt |
| Specificity | Bax Polyclonal Antibody detects endogenous levels of Bax protein. |
| Immunogen Type | peptide |
| Immunogen Description | Synthesized peptide derived from the Internal region of human Bax. |
| Target Name | Bax |
| Other Names | BAX; BCL2L4; Apoptosis regulator BAX; Bcl-2-like protein 4; Bcl2-L-4 |
| Accession No. | Swiss-Prot: Q07812NCBI Gene ID: 581 |
| Uniprot | Q07812 |
| GeneID | 581; |
| SDS-PAGE MW | 22kd |
| Concentration | 1mg/ml |
| Formulation | Liquid in PBS containing 50% glycerol, 0.5% BSA and 0.02% sodium azide. |
| Storage | Store at -20°C/1 year |

Application Details

Western Blot: 1/500 - 1/2000.

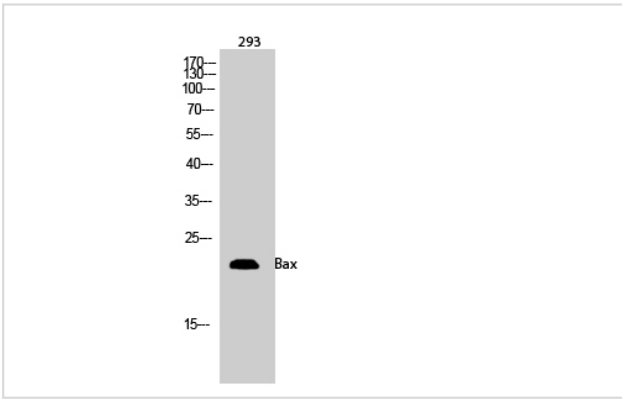
Immunohistochemistry: 1/100 - 1/300.

Immunofluorescence: 1/200 - 1/1000.

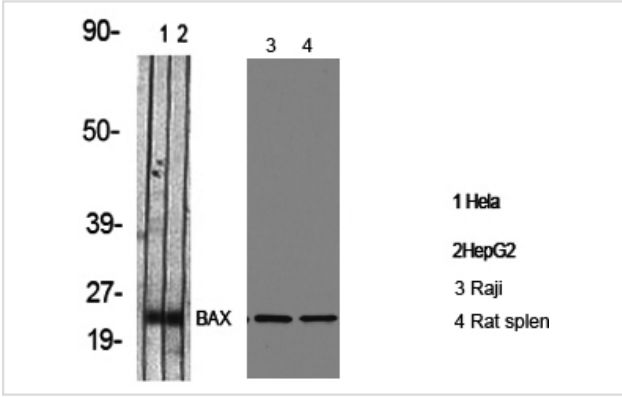
ELISA: 1/20000.

Not yet tested in other applications.

Images



Western Blot analysis of 293 cells using Bax Polyclonal Antibody



Western Blot analysis of HELA HepG2 RAJI RAT-SPLEEN cells using Bax Polyclonal Antibody

Note: This product is for in vitro research use only