

## BCAS2 Polyclonal Antibody

Catalog No: #40637

Package Size: #40637-1 50ul #40637-2 100ul

Orders: order@signalwayantibody.com

Support: tech@signalwayantibody.com

## Description

Product Name	BCAS2 Polyclonal Antibody
Host Species	Rabbit
Clonality	Polyclonal
Purification	The antibody was affinity-purified from rabbit antiserum by affinity-chromatography using epitope-specific immunogen.
Applications	WB ELISA
Species Reactivity	Hu Ms Rt Mk
Specificity	BCAS2 Polyclonal Antibody detects endogenous levels of BCAS2 protein.
Immunogen Type	peptide
Immunogen Description	Synthesized peptide derived from the C-terminal region of human BCAS2.
Target Name	BCAS2
Other Names	BCAS2; DAM1; Pre-mRNA-splicing factor SPF27; Breast carcinoma-amplified sequence 2; DNA amplified in mammary carcinoma 1 protein; Spliceosome-associated protein SPF 27
Accession No.	Swiss-Prot: O75934NCBI Gene ID: 10286
Uniprot	O75934
GeneID	10286;
SDS-PAGE MW	27kd
Concentration	1mg/ml
Formulation	Liquid in PBS containing 50% glycerol, 0.5% BSA and 0.02% sodium azide.
Storage	Store at -20°C/1 year

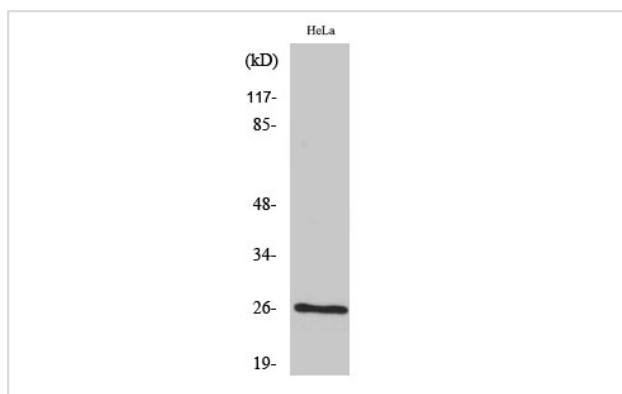
## Application Details

Western Blot: 1/500 - 1/2000.

ELISA: 1/5000.

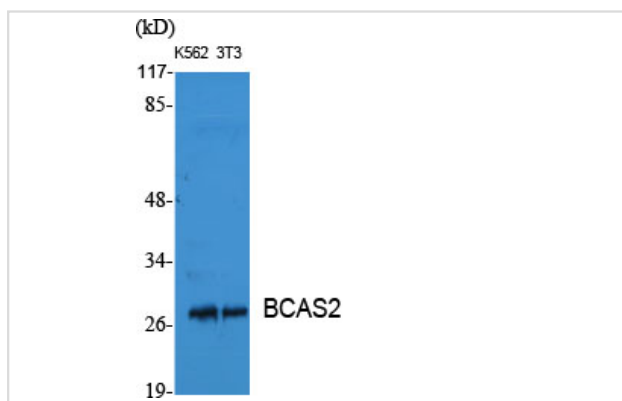
Not yet tested in other applications.

## Images



Western Blot analysis of COS7 cells using BCAS2 Polyclonal Antibody

Western Blot analysis of K562 NIH-3T3 cells using BCAS2 Polyclonal Antibody



Note: This product is for in vitro research use only