

Bcl-2 Polyclonal Antibody

Catalog No: #40639

Package Size: #40639-1 50ul #40639-2 100ul

Orders: order@signalwayantibody.comSupport: tech@signalwayantibody.com

Description

| | |
|-----------------------|---|
| Product Name | Bcl-2 Polyclonal Antibody |
| Host Species | Rabbit |
| Clonality | Polyclonal |
| Purification | The antibody was affinity-purified from rabbit antiserum by affinity-chromatography using epitope-specific immunogen. |
| Applications | WB IHC IF ELISA |
| Species Reactivity | Hu Ms Rt |
| Specificity | Bcl-2 Polyclonal Antibody detects endogenous levels of Bcl-2 protein. |
| Immunogen Type | peptide |
| Immunogen Description | Synthesized peptide derived from human Bcl-2 around the non-phosphorylation site of T69. |
| Target Name | Bcl-2 |
| Other Names | BCL2; Apoptosis regulator Bcl-2 |
| Accession No. | Swiss-Prot: P10415NCBI Gene ID: 596 |
| Uniprot | P10415 |
| GeneID | 596; |
| SDS-PAGE MW | 26kd |
| Concentration | 1mg/ml |
| Formulation | Liquid in PBS containing 50% glycerol, 0.5% BSA and 0.02% sodium azide. |
| Storage | Store at -20°C/1 year |

Application Details

Western Blot: 1/500 - 1/2000.

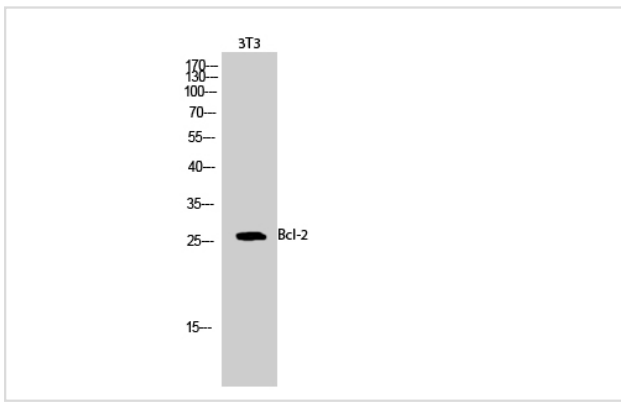
Immunohistochemistry: 1/100 - 1/300.

Immunofluorescence: 1/200 - 1/1000.

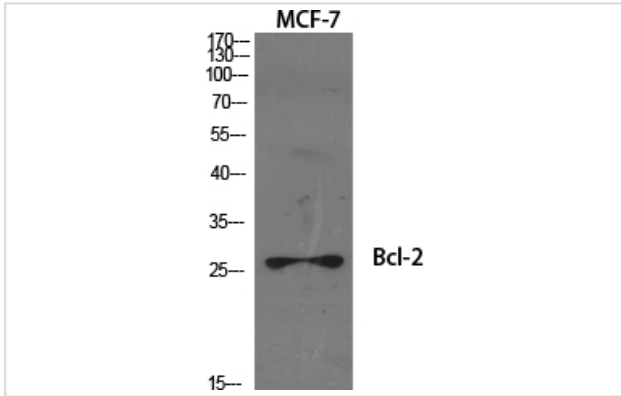
ELISA: 1/10000.

Not yet tested in other applications.

Images



Western Blot analysis of 3T3 cells using Bcl-2 Polyclonal Antibody



Western Blot analysis of MCF7 cells using Bcl-2 Polyclonal Antibody

Note: This product is for in vitro research use only