

Bcl-x Polyclonal Antibody

Catalog No: #40642

Package Size: #40642-1 50ul #40642-2 100ul

Orders: order@signalwayantibody.comSupport: tech@signalwayantibody.com

Description

| | |
|-----------------------|---|
| Product Name | Bcl-x Polyclonal Antibody |
| Host Species | Rabbit |
| Clonality | Polyclonal |
| Purification | The antibody was affinity-purified from rabbit antiserum by affinity-chromatography using epitope-specific immunogen. |
| Applications | WB IHC IF ELISA |
| Species Reactivity | Hu Ms Rt |
| Specificity | Bcl-x Polyclonal Antibody detects endogenous levels of Bcl-x protein. |
| Immunogen Type | peptide |
| Immunogen Description | Synthesized peptide derived from human Bcl-x around the non-phosphorylation site of T47. |
| Target Name | Bcl-x |
| Other Names | BCL2L1; BCL2L; BCLX; Bcl-2-like protein 1; Bcl2-L-1; Apoptosis regulator Bcl-X |
| Accession No. | Swiss-Prot: Q07817NCBI Gene ID: 598 |
| Uniprot | Q07817 |
| GeneID | 598; |
| SDS-PAGE MW | 30kd |
| Concentration | 1mg/ml |
| Formulation | Liquid in PBS containing 50% glycerol, 0.5% BSA and 0.02% sodium azide. |
| Storage | Store at -20°C/1 year |

Application Details

Western Blot: 1/500 - 1/2000.

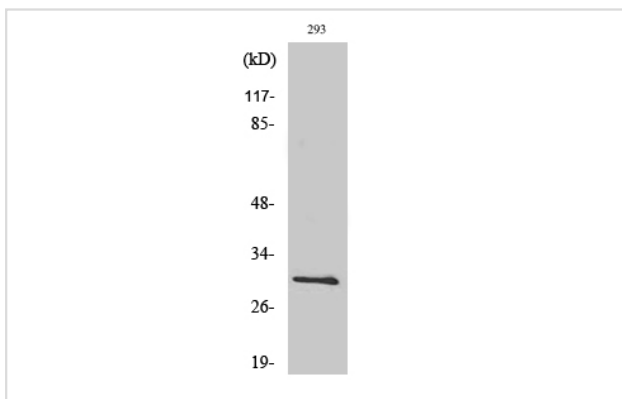
Immunohistochemistry: 1/100 - 1/300.

Immunofluorescence: 1/200 - 1/1000.

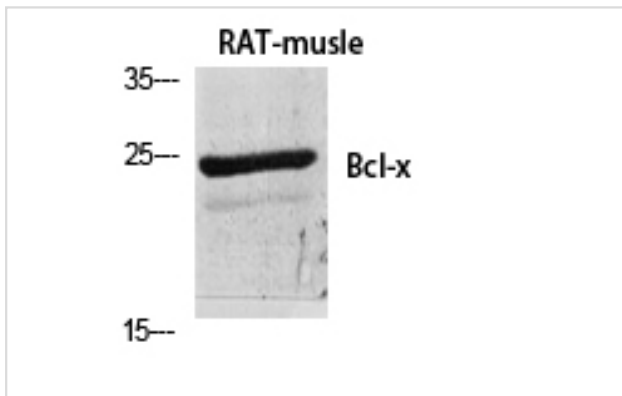
ELISA: 1/5000.

Not yet tested in other applications.

Images



Western Blot analysis of 293 cells using Bcl-x Polyclonal Antibody



Western Blot analysis of RAT-MUSCLE cells using Bcl-x Polyclonal Antibody

Note: This product is for in vitro research use only