

## Bcl-x Polyclonal Antibody

Catalog No: #40643

Package Size: #40643-1 50ul #40643-2 100ul

Orders: [order@signalwayantibody.com](mailto:order@signalwayantibody.com)Support: [tech@signalwayantibody.com](mailto:tech@signalwayantibody.com)

## Description

Product Name	Bcl-x Polyclonal Antibody
Host Species	Rabbit
Clonality	Polyclonal
Purification	The antibody was affinity-purified from rabbit antiserum by affinity-chromatography using epitope-specific immunogen.
Applications	WB IHC ELISA
Species Reactivity	Hu Ms Rt
Specificity	Bcl-x Polyclonal Antibody detects endogenous levels of Bcl-x protein.
Immunogen Type	peptide
Immunogen Description	Synthesized peptide derived from human Bcl-x around the non-phosphorylation site of S62.
Target Name	Bcl-x
Other Names	BCL2L1; BCL2L; BCLX; Bcl-2-like protein 1; Bcl2-L-1; Apoptosis regulator Bcl-X
Accession No.	Swiss-Prot: Q07817NCBI Gene ID: 598
Uniprot	Q07817
GeneID	598;
SDS-PAGE MW	24kd
Concentration	1mg/ml
Formulation	Liquid in PBS containing 50% glycerol, 0.5% BSA and 0.02% sodium azide.
Storage	Store at -20°C/1 year

## Application Details

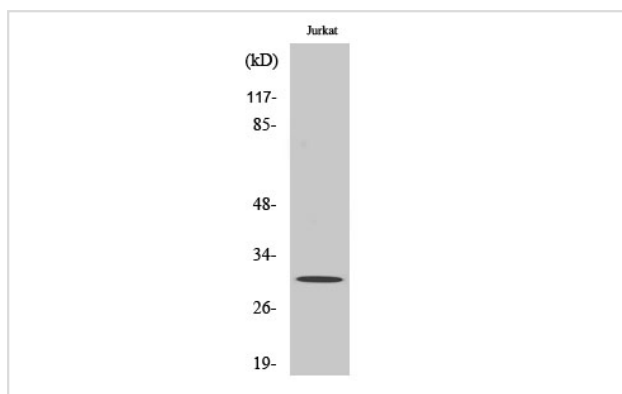
Western Blot: 1/500 - 1/2000.

Immunohistochemistry: 1/100 - 1/300.

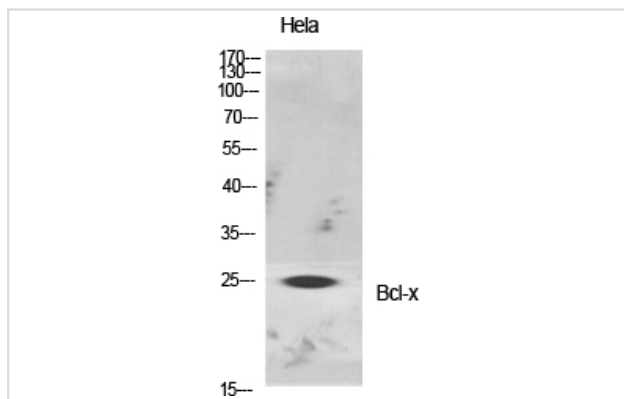
ELISA: 1/10000.

Not yet tested in other applications.

## Images



Western Blot analysis of Jurkat cells using Bcl-x Polyclonal Antibody



Western Blot analysis of HELA cells using Bcl-x Polyclonal Antibody

---

Note: This product is for in vitro research use only