

BM28 Polyclonal Antibody

Catalog No: #40647

Package Size: #40647-1 50ul #40647-2 100ul

Orders: order@signalwayantibody.comSupport: tech@signalwayantibody.com

Description

Product Name	BM28 Polyclonal Antibody
Host Species	Rabbit
Clonality	Polyclonal
Purification	The antibody was affinity-purified from rabbit antiserum by affinity-chromatography using epitope-specific immunogen.
Applications	WB IHC IF ELISA
Species Reactivity	Hu Ms
Specificity	BM28 Polyclonal Antibody detects endogenous levels of BM28 protein.
Immunogen Type	peptide
Immunogen Description	Synthesized peptide derived from the N-terminal region of human BM28.
Target Name	BM28
Other Names	MCM2; BM28; CCNL1; CDCL1; KIAA0030; DNA replication licensing factor MCM2; Minichromosome maintenance protein 2 homolog; Nuclear protein BM28
Accession No.	Swiss-Prot: P49736NCBI Gene ID: 4171
Uniprot	P49736
GeneID	4171;
SDS-PAGE MW	120kd
Concentration	1mg/ml
Formulation	Liquid in PBS containing 50% glycerol, 0.5% BSA and 0.02% sodium azide.
Storage	Store at -20°C/1 year

Application Details

Western Blot: 1/500 - 1/2000.

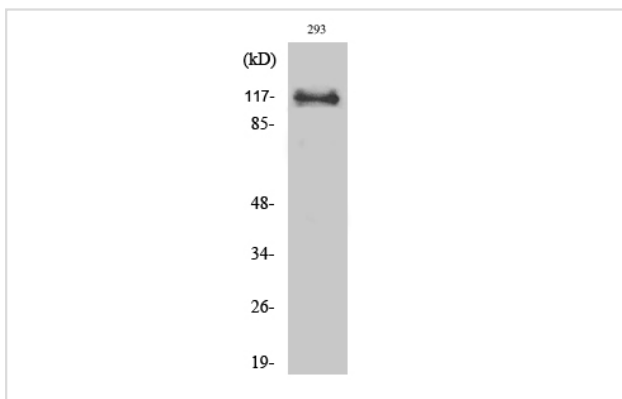
Immunohistochemistry: 1/100 - 1/300.

Immunofluorescence: 1/200 - 1/1000.

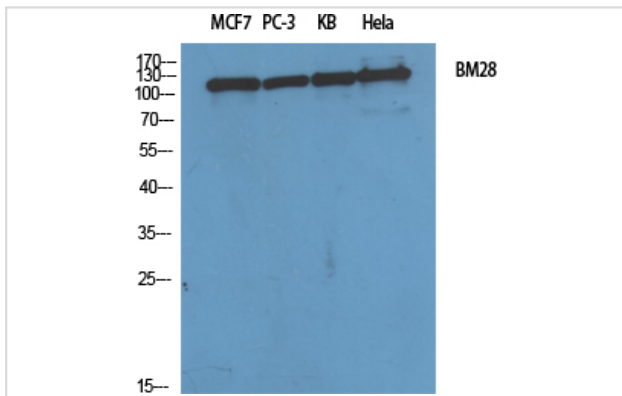
ELISA: 1/40000.

Not yet tested in other applications.

Images



Western Blot analysis of 293 cells using BM28 Polyclonal Antibody



Western Blot analysis of MCF7 PC-3 KB HELA cells using BM28 Polyclonal Antibody

Note: This product is for in vitro research use only