

BMP-2 Polyclonal Antibody

Catalog No: #40648

Package Size: #40648-1 50ul #40648-2 100ul

Orders: order@signalwayantibody.comSupport: tech@signalwayantibody.com

Description

Product Name	BMP-2 Polyclonal Antibody
Host Species	Rabbit
Clonality	Polyclonal
Purification	The antibody was affinity-purified from rabbit antiserum by affinity-chromatography using epitope-specific immunogen.
Applications	WB IHC ELISA IF
Species Reactivity	Hu Ms Rt
Specificity	BMP-2 Polyclonal Antibody detects endogenous levels of BMP-2 protein.
Immunogen Description	Synthesized peptide derived from the Internal region of human BMP-2.
Target Name	BMP-2
Other Names	BMP2; BMP2A; Bone morphogenetic protein 2; BMP-2; Bone morphogenetic protein 2A; BMP-2A
Accession No.	Swiss-Prot: P12643NCBI Gene ID: 650
Uniprot	P12643
GeneID	650;
SDS-PAGE MW	60kd
Concentration	1mg/ml
Formulation	Liquid in PBS containing 50% glycerol, 0.5% BSA and 0.02% sodium azide.
Storage	Store at -20°C/1 year

Application Details

Western Blot: 1/500 - 1/2000.

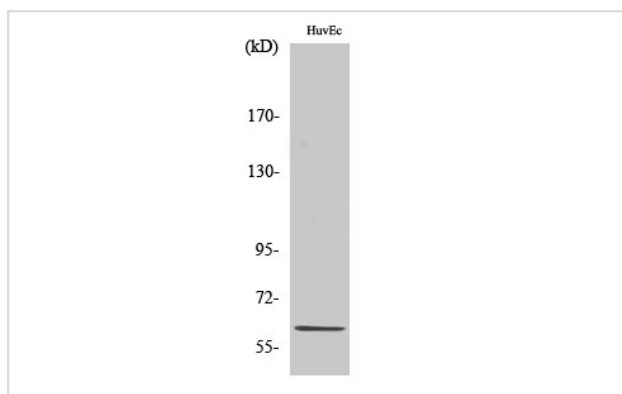
Immunohistochemistry: 1/100 - 1/300.

ELISA: 1/20000.

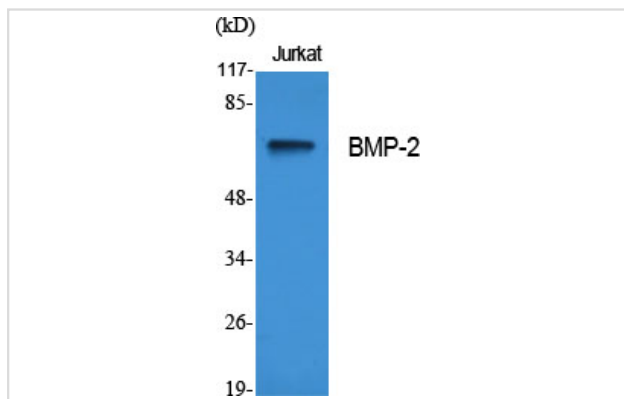
Not yet tested in other applications.

IF: 1:50-1:100

Images



Western Blot analysis of HuvEc cells using BMP-2 Polyclonal Antibody



Western Blot analysis of Jurkat cells using BMP-2 Polyclonal Antibody

Note: This product is for in vitro research use only