

## BMP-7 Polyclonal Antibody

Catalog No: #40651

Package Size: #40651-1 50ul #40651-2 100ul

Orders: order@signalwayantibody.com

Support: tech@signalwayantibody.com

## Description

Product Name	BMP-7 Polyclonal Antibody
Host Species	Rabbit
Clonality	Polyclonal
Purification	The antibody was affinity-purified from rabbit antiserum by affinity-chromatography using epitope-specific immunogen.
Applications	WB IHC ELISA
Species Reactivity	Hu Ms Rt
Specificity	BMP-7 Polyclonal Antibody detects endogenous levels of BMP-7 protein.
Immunogen Type	peptide
Immunogen Description	Synthesized peptide derived from the Internal region of human BMP-7.
Target Name	BMP-7
Other Names	BMP7; OP1; Bone morphogenetic protein 7; BMP-7; Osteogenic protein 1; OP-1; Eptotermin alfa
Accession No.	Swiss-Prot: P18075NCBI Gene ID: 655
Uniprot	P18075
GeneID	655;
SDS-PAGE MW	55kd
Concentration	1mg/ml
Formulation	Liquid in PBS containing 50% glycerol, 0.5% BSA and 0.02% sodium azide.
Storage	Store at -20°C/1 year

## Application Details

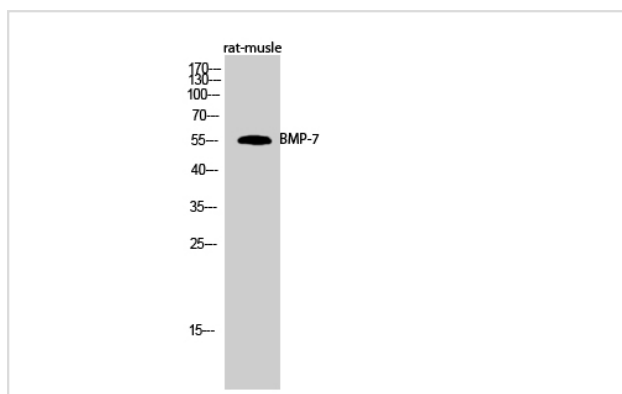
Western Blot: 1/500 - 1/2000.

Immunohistochemistry: 1/100 - 1/300.

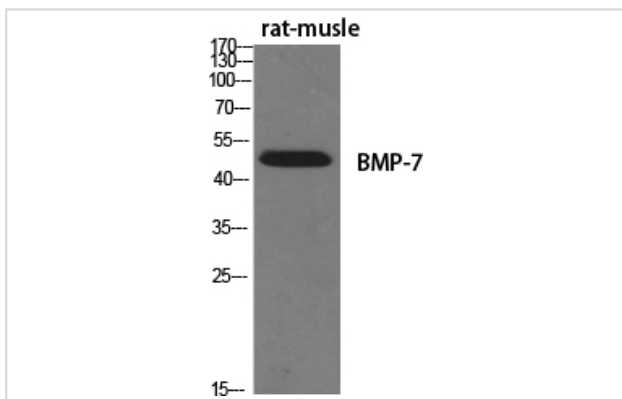
ELISA: 1/40000.

Not yet tested in other applications.

## Images



Western Blot analysis of rat-muscle cells using BMP-7 Polyclonal Antibody



Western Blot analysis of RAT-MUSCLE cells using BMP-7 Polyclonal Antibody

---

Note: This product is for in vitro research use only