

BMP-8B Polyclonal Antibody

Catalog No: #40652

Package Size: #40652-1 50ul #40652-2 100ul

Orders: order@signalwayantibody.comSupport: tech@signalwayantibody.com

Description

Product Name	BMP-8B Polyclonal Antibody
Host Species	Rabbit
Clonality	Polyclonal
Purification	The antibody was affinity-purified from rabbit antiserum by affinity-chromatography using epitope-specific immunogen.
Applications	WB ELISA
Species Reactivity	Hu
Specificity	BMP-8B Polyclonal Antibody detects endogenous levels of BMP-8B protein.
Immunogen Type	peptide
Immunogen Description	Synthesized peptide derived from the Internal region of human BMP-8B.
Target Name	BMP-8B
Other Names	BMP8B; BMP8; Bone morphogenetic protein 8B; BMP-8; BMP-8B; Osteogenic protein 2; OP-2
Accession No.	Swiss-Prot: P34820NCBI Gene ID: 656
Uniprot	P34820
GeneID	656;
SDS-PAGE MW	45kd
Concentration	1mg/ml
Formulation	Liquid in PBS containing 50% glycerol, 0.5% BSA and 0.02% sodium azide.
Storage	Store at -20°C/1 year

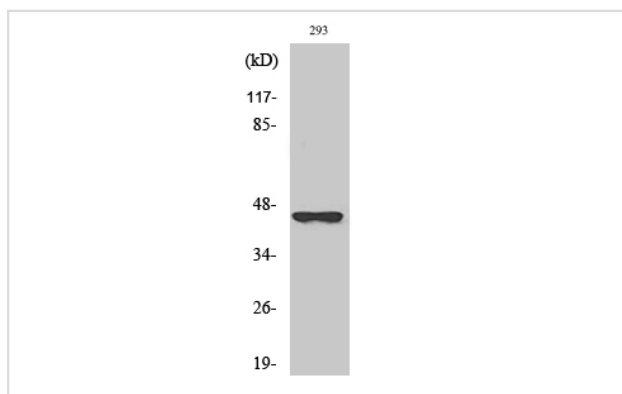
Application Details

Western Blot: 1/500 - 1/2000.

ELISA: 1/40000.

Not yet tested in other applications.

Images



Western Blot analysis of A549 cells using BMP-8B Polyclonal Antibody

Note: This product is for in vitro research use only