

Inhibin beta A chain

Catalog No: #AP78689

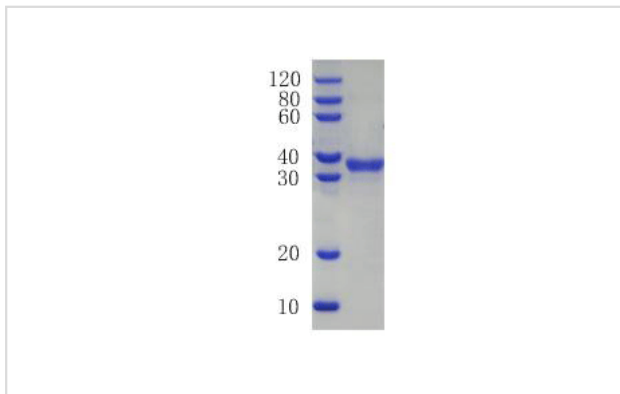
Package Size: #AP78689-1 50ug #AP78689-2 100ug #AP78689-3 1mg

Orders: order@signalwayantibody.comSupport: tech@signalwayantibody.com

Description

Product Name	Inhibin beta A chain
Brief Description	Recombinant Protein
Host Species	E.coli
Purification	Greater than 90% by SDS-PAGE
Species Reactivity	Human
Immunogen Description	311-426aa
Other Names	Activin beta-A chain,Erythroid differentiation protein,EDF
Accession No.	P08476Gene name:INHBA
Uniprot	P08476
GeneID	3624;
Calculated MW	12.76
Tag Info	His
Formulation	50mM NaH ₂ PO ₄ , 500mM NaCl Buffer with 500mM Imidazole,10%glycerol(PH8.0)
Storage	Store at -20C. (Avoid repeated freezing and thawing.)Repeated freezing and thawing is not recommended. Store working aliquots at 4°C for up to one week.

Images



Background

Inhibins and activins inhibit and activate, respectively, the secretion of follitropin by the pituitary gland. Inhibins/activins are involved in regulating a number of diverse functions such as hypothalamic and pituitary hormone secretion, gonadal hormone secretion, germ cell development and maturation, erythroid differentiation, insulin secretion, nerve cell survival, embryonic axial development or bone growth, depending on their subunit composition. Inhibins appear to oppose the functions of activins.

References

Repeated freezing and thawing is not recommended. Store working aliquots at 4°C for up to one week.

Note: This product is for in vitro research use only