

C/EBP  $\beta$  Polyclonal Antibody

Catalog No: #40657

Package Size: #40657-1 50ul #40657-2 100ul

Orders: [order@signalwayantibody.com](mailto:order@signalwayantibody.com)Support: [tech@signalwayantibody.com](mailto:tech@signalwayantibody.com)

## Description

Product Name	C/EBP $\beta$ Polyclonal Antibody
Host Species	Rabbit
Clonality	Polyclonal
Purification	The antibody was affinity-purified from rabbit antiserum by affinity-chromatography using epitope-specific immunogen.
Applications	WB IHC ELISA
Species Reactivity	Hu Ms Rt
Specificity	C/EBP $\beta$ Polyclonal Antibody detects endogenous levels of C/EBP $\beta$ protein.
Immunogen Type	peptide
Immunogen Description	Synthesized peptide derived from human C/EBP $\beta$ around the non-phosphorylation site of T235.
Target Name	C/EBP $\beta$
Other Names	CEBPB; LAP; TCF5; PP9092; CCAAT/enhancer-binding protein beta; C/EBP beta; Liver activator protein; Nuclear factor NF-IL6; Transcription factor 5; TCF-5
Accession No.	Swiss-Prot: P17676NCBI Gene ID: 1051
Uniprot	P17676
GeneID	1051;
SDS-PAGE MW	36kd
Concentration	1mg/ml
Formulation	Liquid in PBS containing 50% glycerol, 0.5% BSA and 0.02% sodium azide.
Storage	Store at -20°C/1 year

## Application Details

Western Blot: 1/500 - 1/2000.

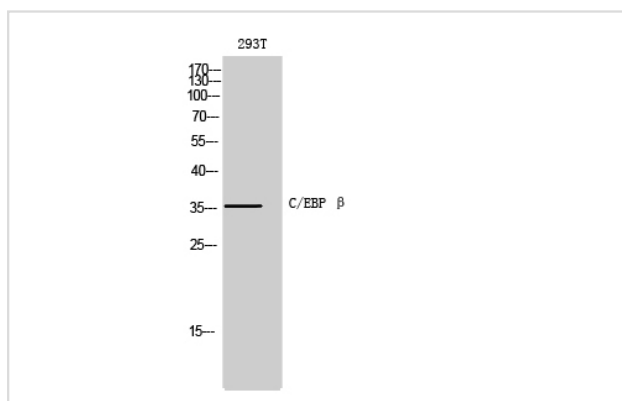
Immunohistochemistry: 1/100 - 1/300.

ELISA: 1/10000.

Not yet tested in other applications.

## Images

Western Blot analysis of 293T cells using C/EBP  $\beta$  Polyclonal Antibody



Note: This product is for in vitro research use only