

C/EBP  $\delta/\epsilon$  Polyclonal Antibody

Catalog No: #40659

Package Size: #40659-1 50ul #40659-2 100ul

Orders: [order@signalwayantibody.com](mailto:order@signalwayantibody.com)Support: [tech@signalwayantibody.com](mailto:tech@signalwayantibody.com)

## Description

Product Name	C/EBP $\delta/\epsilon$ Polyclonal Antibody
Host Species	Rabbit
Clonality	Polyclonal
Purification	The antibody was affinity-purified from rabbit antiserum by affinity-chromatography using epitope-specific immunogen.
Applications	WB IHC IF ELISA
Species Reactivity	Hu Ms Rt
Specificity	C/EBP $\delta/\epsilon$ Polyclonal Antibody detects endogenous levels of C/EBP $\delta/\epsilon$ protein.
Immunogen Type	peptide
Immunogen Description	Synthesized peptide derived from the C-terminal region of human C/EBP $\delta/\epsilon$ .
Target Name	C/EBP $\delta/\epsilon$
Other Names	CEBPD; CCAAT/enhancer-binding protein delta; C/EBP delta; Nuclear factor NF-IL6-beta; NF-IL6-beta; CEBPE; CCAAT/enhancer-binding protein epsilon; C/EBP epsilon
Accession No.	Swiss-Prot: P49716/Q15744NCBI Gene ID: 1052/1053
Uniprot	P49716
GeneID	1052;
SDS-PAGE MW	28kd
Concentration	1mg/ml
Formulation	Liquid in PBS containing 50% glycerol, 0.5% BSA and 0.02% sodium azide.
Storage	Store at -20°C/1 year

## Application Details

Western Blot: 1/500 - 1/2000.

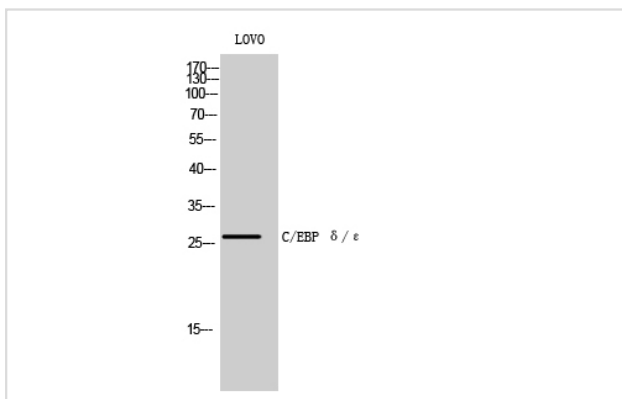
Immunohistochemistry: 1/100 - 1/300.

Immunofluorescence: 1/200 - 1/1000.

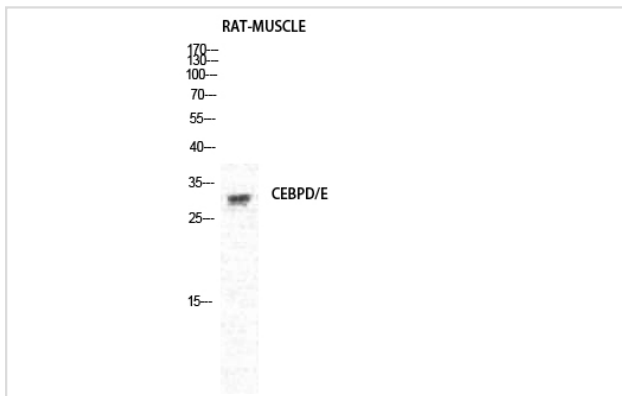
ELISA: 1/20000.

Not yet tested in other applications.

## Images



Western Blot analysis of LOVO cells using C/EBP  $\delta / \epsilon$  Polyclonal Antibody



Western Blot analysis of RAT-MUSCLE cells using C/EBP  $\delta / \epsilon$  Polyclonal Antibody

---

Note: This product is for in vitro research use only