

CA XII Polyclonal Antibody

Catalog No: #40662

Package Size: #40662-1 50ul #40662-2 100ul

Orders: order@signalwayantibody.com

Support: tech@signalwayantibody.com

Description

| | |
|-----------------------|---|
| Product Name | CA XII Polyclonal Antibody |
| Host Species | Rabbit |
| Clonality | Polyclonal |
| Purification | The antibody was affinity-purified from rabbit antiserum by affinity-chromatography using epitope-specific immunogen. |
| Applications | WB ELISA |
| Species Reactivity | Hu Ms Rt |
| Specificity | CA XII Polyclonal Antibody detects endogenous levels of CA XII protein. |
| Immunogen Type | peptide |
| Immunogen Description | Synthesized peptide derived from the Internal region of human CA XII. |
| Target Name | CA XII |
| Other Names | CA12; Carbonic anhydrase 12; Carbonate dehydratase XII; Carbonic anhydrase XII; CA-XII; Tumor antigen HOM-RCC-3.1.3 |
| Accession No. | Swiss-Prot: O43570NCBI Gene ID: 771 |
| Uniprot | O43570 |
| GeneID | 771; |
| SDS-PAGE MW | 39kd |
| Concentration | 1mg/ml |
| Formulation | Liquid in PBS containing 50% glycerol, 0.5% BSA and 0.02% sodium azide. |
| Storage | Store at -20°C/1 year |

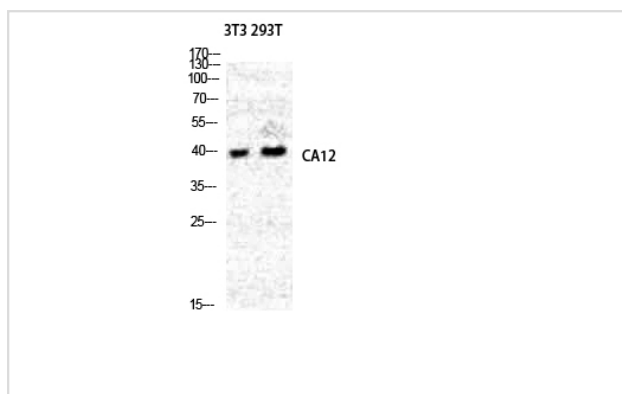
Application Details

Western Blot: 1/500 - 1/2000.

ELISA: 1/40000.

Not yet tested in other applications.

Images



Western Blot analysis of NIH-3T3 293T cells using CA XII Polyclonal Antibody

Note: This product is for in vitro research use only