

## Cadherin-16 Polyclonal Antibody

Catalog No: #40665

Package Size: #40665-1 50ul #40665-2 100ul

Orders: [order@signalwayantibody.com](mailto:order@signalwayantibody.com)Support: [tech@signalwayantibody.com](mailto:tech@signalwayantibody.com)

## Description

Product Name	Cadherin-16 Polyclonal Antibody
Host Species	Rabbit
Clonality	Polyclonal
Purification	The antibody was affinity-purified from rabbit antiserum by affinity-chromatography using epitope-specific immunogen.
Applications	WB IHC IF ELISA
Species Reactivity	Hu
Specificity	Cadherin-16 Polyclonal Antibody detects endogenous levels of Cadherin-16 protein.
Immunogen Type	peptide
Immunogen Description	Synthesized peptide derived from the C-terminal region of human Cadherin-16.
Target Name	Cadherin-16
Other Names	CDH16; Cadherin-16; Kidney-specific cadherin; Ksp-cadherin
Accession No.	Swiss-Prot: O75309NCBI Gene ID: 1014
Uniprot	O75309
GeneID	1014;
SDS-PAGE MW	90kd
Concentration	1mg/ml
Formulation	Liquid in PBS containing 50% glycerol, 0.5% BSA and 0.02% sodium azide.
Storage	Store at -20°C/1 year

## Application Details

Western Blot: 1/500 - 1/2000.

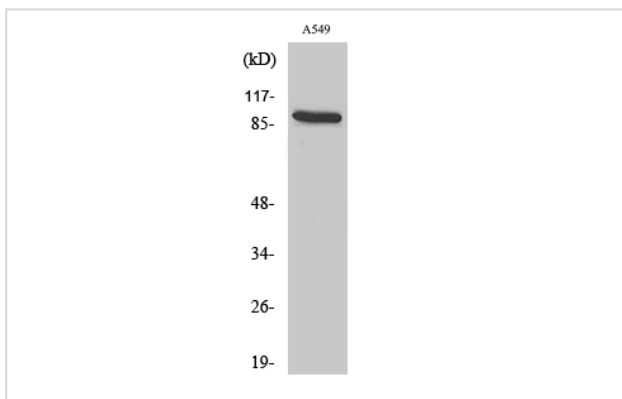
Immunohistochemistry: 1/100 - 1/300.

Immunofluorescence: 1/200 - 1/1000.

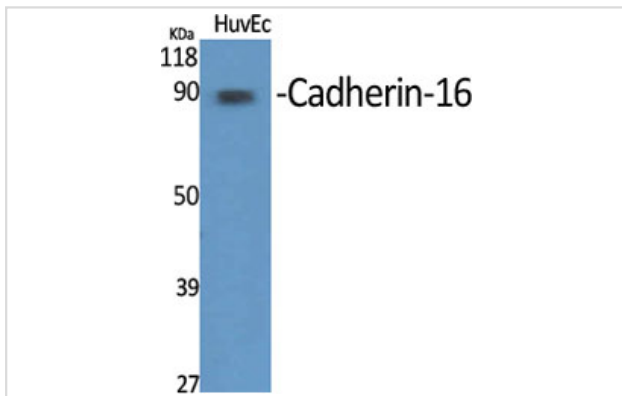
ELISA: 1/10000.

Not yet tested in other applications.

## Images



Western Blot analysis of A549 cells using Cadherin-16 Polyclonal Antibody



Western Blot analysis of HuvEc cells using Cadherin-16 Polyclonal Antibody

---

Note: This product is for in vitro research use only