

CAGE-1 Polyclonal Antibody

Catalog No: #40667

Package Size: #40667-1 50ul #40667-2 100ul

Orders: order@signalwayantibody.comSupport: tech@signalwayantibody.com

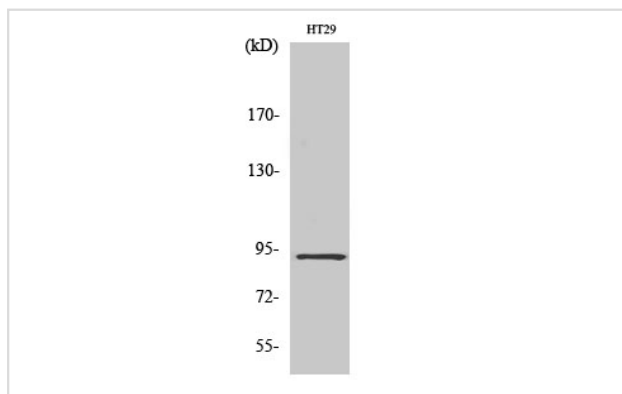
Description

Product Name	CAGE-1 Polyclonal Antibody
Host Species	Rabbit
Clonality	Polyclonal
Purification	The antibody was affinity-purified from rabbit antiserum by affinity-chromatography using epitope-specific immunogen.
Applications	WB IHC
Species Reactivity	Hu
Specificity	CAGE-1 Polyclonal Antibody detects endogenous levels of CAGE-1 protein.
Immunogen Description	Synthesized peptide derived from the C-terminal region of human CAGE-1.
Target Name	CAGE-1
Other Names	CAGE1; CTAG3; Cancer-associated gene 1 protein; CAGE-1; Cancer/testis antigen 3; CT3
Accession No.	Swiss-Prot: Q8TC20NCBI Gene ID: 285782
Uniprot	Q8TC20
GeneID	285782;
SDS-PAGE MW	90kd
Concentration	1mg/ml
Formulation	Liquid in PBS containing 50% glycerol, 0.5% BSA and 0.02% sodium azide.
Storage	Store at -20°C/1 year

Application Details

Western Blot: 1/500 - 1/2000. Immunohistochemistry: 1/100 - 1/300.

Images



Western Blot analysis of HT29 cells using CAGE-1 Polyclonal Antibody

Note: This product is for in vitro research use only