

Calmodulin Polyclonal Antibody

Catalog No: #40668

Package Size: #40668-1 50ul #40668-2 100ul

Orders: order@signalwayantibody.comSupport: tech@signalwayantibody.com

Description

Product Name	Calmodulin Polyclonal Antibody
Host Species	Rabbit
Clonality	Polyclonal
Purification	The antibody was affinity-purified from rabbit antiserum by affinity-chromatography using epitope-specific immunogen.
Applications	WB IHC IF ELISA
Species Reactivity	Hu Ms Rt
Specificity	Calmodulin Polyclonal Antibody detects endogenous levels of Calmodulin protein.
Immunogen Type	peptide
Immunogen Description	Synthesized peptide derived from human Calmodulin around the non-phosphorylation site of T80/S82.
Target Name	Calmodulin
Other Names	CALM1; CALM; CAM; CAM1; CALM2; CAM2; CAMB; CALM3; CALML2; CAM3; CAMC; CAMIII; Calmodulin; CaM
Accession No.	Swiss-Prot: P62158NCBI Gene ID: 801/805/808
Uniprot	P0DP25
GeneID	801;805;808;
SDS-PAGE MW	18kd
Concentration	1mg/ml
Formulation	Liquid in PBS containing 50% glycerol, 0.5% BSA and 0.02% sodium azide.
Storage	Store at -20°C/1 year

Application Details

Western Blot: 1/500 - 1/2000.

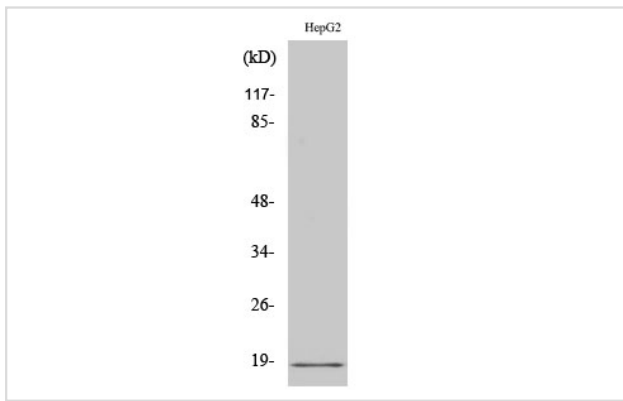
Immunohistochemistry: 1/100 - 1/300.

Immunofluorescence: 1/200 - 1/1000.

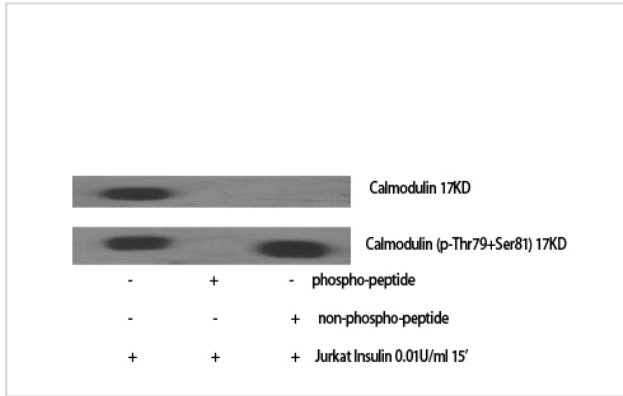
ELISA: 1/10000.

Not yet tested in other applications.

Images



Western Blot analysis of HuvEc cells using Calmodulin Polyclonal Antibody



Western Blot analysis of Jukat+Insulin cells using Calmodulin Polyclonal Antibody

Note: This product is for in vitro research use only