

CAS Polyclonal Antibody

Catalog No: #40671

Package Size: #40671-1 50ul #40671-2 100ul

Orders: order@signalwayantibody.comSupport: tech@signalwayantibody.com

Description

Product Name	CAS Polyclonal Antibody
Host Species	Rabbit
Clonality	Polyclonal
Purification	The antibody was affinity-purified from rabbit antiserum by affinity-chromatography using epitope-specific immunogen.
Applications	WB IHC IP IF ELISA
Species Reactivity	Hu
Specificity	CAS Polyclonal Antibody detects endogenous levels of CAS protein.
Immunogen Type	peptide
Immunogen Description	Synthesized peptide derived from the N-terminal region of human CAS.
Target Name	CAS
Other Names	CSE1L; CAS; XPO2; Exportin-2; Exp2; Cellular apoptosis susceptibility protein; Chromosome segregation 1-like protein; Importin-alpha re-exporter
Accession No.	Swiss-Prot: P55060NCBI Gene ID: 1434
Uniprot	P55060
GeneID	1434;
SDS-PAGE MW	110kd
Concentration	1mg/ml
Formulation	Liquid in PBS containing 50% glycerol, 0.5% BSA and 0.02% sodium azide.
Storage	Store at -20°C/1 year

Application Details

Western Blot: 1/500 - 1/2000.

Immunohistochemistry: 1/100 - 1/300. Immunoprec

Immunoprecipitation: 2-5 ug/mg lysate.

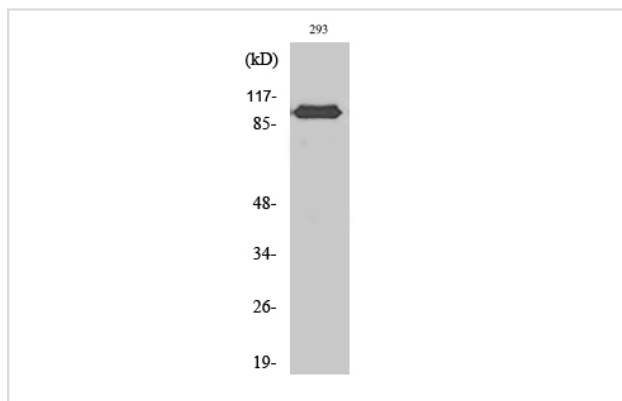
Immunofluorescence: 1/200 - 1/1000.

ELISA: 1/40000.

Not yet tested in other applications.

Images

Western Blot analysis of 293 cells using CAS Polyclonal Antibody



Note: This product is for in vitro research use only