

## claudin 14 antibody

Catalog No: #22590

Orders: order@signalwayantibody.com

Support: tech@signalwayantibody.com

## Description

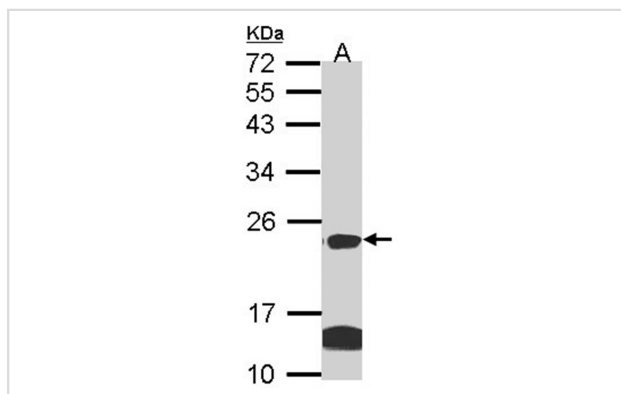
Product Name	claudin 14 antibody
Host Species	Rabbit
Clonality	Polyclonal
Purification	Purified by antigen-affinity chromatography.
Applications	WB
Species Reactivity	Hu
Immunogen Type	Peptide
Immunogen Description	Synthetic peptide contain a sequence corresponding to a region within amino acids 177 and 189 (O95500) of Claudin 14
Target Name	claudin 14
Accession No.	Swiss-Prot:O95500Gene ID:23562
Uniprot	O95500
GeneID	23562;
Concentration	1mg/ml
Formulation	Supplied in 1XPBS, 40% Glycerol (pH7.0). 0.01% Thimerosal was added as a preservative.
Storage	Store at -20°C for long term preservation (recommended). Store at 4°C for short term use.

## Application Details

Predicted MW: 26kd

Western blotting: 1:500-1:3000

## Images



Sample (30 ug of whole cell lysate)

A: HeLa

B: Hep G2

12% SDS PAGE

Primary antibody diluted at 1: 1000

## Background

Tight junctions represent one mode of cell-to-cell adhesion in epithelial or endothelial cell sheets, forming continuous seals around cells and serving as a physical barrier to prevent solutes and water from passing freely through the paracellular space. These junctions are comprised of sets of continuous networking strands in the outwardly facing cytoplasmic leaflet, with complementary grooves in the inwardly facing extracytoplasmic leaflet. The protein encoded by this gene, a member of the claudin family, is an integral membrane protein and a component of tight junction strands. The encoded protein

also binds specifically to the WW domain of Yes-associated protein. Defects in this gene are the cause of an autosomal recessive form of nonsyndromic sensorineural deafness. Several transcript variants encoding the same protein have been found for this gene. [provided by RefSeq]

---

Note: This product is for in vitro research use only