

## CBP Polyclonal Antibody

Catalog No: #40687

Package Size: #40687-1 50ul #40687-2 100ul

Orders: [order@signalwayantibody.com](mailto:order@signalwayantibody.com)Support: [tech@signalwayantibody.com](mailto:tech@signalwayantibody.com)

## Description

Product Name	CBP Polyclonal Antibody
Host Species	Rabbit
Clonality	Polyclonal
Purification	The antibody was affinity-purified from rabbit antiserum by affinity-chromatography using epitope-specific immunogen.
Applications	WB IHC IF ELISA
Species Reactivity	Hu Ms
Specificity	CBP Polyclonal Antibody detects endogenous levels of CBP protein.
Immunogen Type	peptide
Immunogen Description	Synthesized peptide derived from the C-terminal region of human CBP.
Target Name	CBP
Other Names	CREBBP; CBP; CREB-binding protein
Accession No.	Swiss-Prot: Q92793NCBI Gene ID: 1387
Uniprot	Q92793
GeneID	1387;
SDS-PAGE MW	265kd
Concentration	1mg/ml
Formulation	Liquid in PBS containing 50% glycerol, 0.5% BSA and 0.02% sodium azide.
Storage	Store at -20°C/1 year

## Application Details

Western Blot: 1/500 - 1/2000.

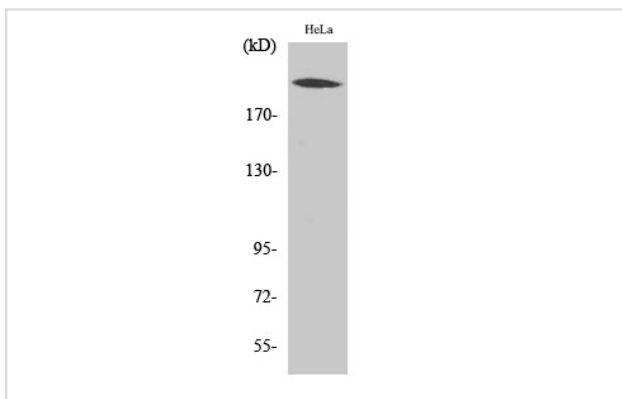
Immunohistochemistry: 1/100 - 1/300.

Immunofluorescence: 1/200 - 1/1000.

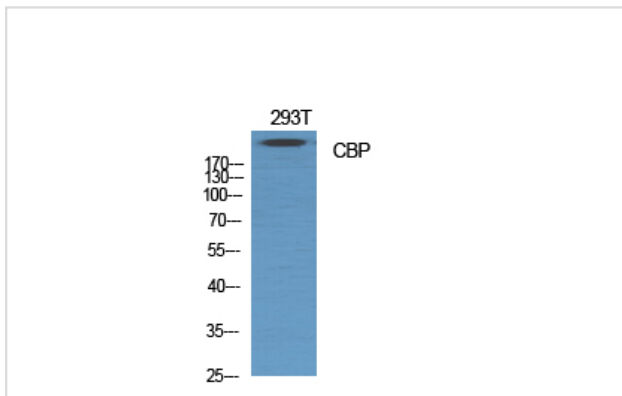
ELISA: 1/10000.

Not yet tested in other applications.

## Images



Western Blot analysis of HeLa cells using CBP Polyclonal Antibody



Western Blot analysis of 293T cells using CBP Polyclonal Antibody

---

Note: This product is for in vitro research use only