

CBP 35 Polyclonal Antibody

Catalog No: #40688

Package Size: #40688-1 50ul #40688-2 100ul

Orders: order@signalwayantibody.comSupport: tech@signalwayantibody.com

Description

Product Name	CBP 35 Polyclonal Antibody
Host Species	Rabbit
Clonality	Polyclonal
Purification	The antibody was affinity-purified from rabbit antiserum by affinity-chromatography using epitope-specific immunogen.
Applications	WB IHC IF ELISA
Species Reactivity	Hu Ms Rt
Specificity	CBP 35 Polyclonal Antibody detects endogenous levels of CBP 35 protein.
Immunogen Type	peptide
Immunogen Description	Synthesized peptide derived from the Internal region of human CBP 35.
Target Name	CBP 35
Other Names	LGALS3; MAC2; Galectin-3; Gal-3; 35 kDa lectin; Carbohydrate-binding protein 35; CBP 35; Galactose-specific lectin 3; Galactoside-binding protein; GALBP; IgE-binding protein; L-31; Laminin-binding protein; Lectin L-29; Mac-2 antigen
Accession No.	Swiss-Prot: P17931NCBI Gene ID: 3958
Uniprot	P17931
GeneID	3958;
SDS-PAGE MW	27kd
Concentration	1mg/ml
Formulation	Liquid in PBS containing 50% glycerol, 0.5% BSA and 0.02% sodium azide.
Storage	Store at -20°C/1 year

Application Details

Western Blot: 1/500 - 1/2000.

Immunohistochemistry: 1/100 - 1/300.

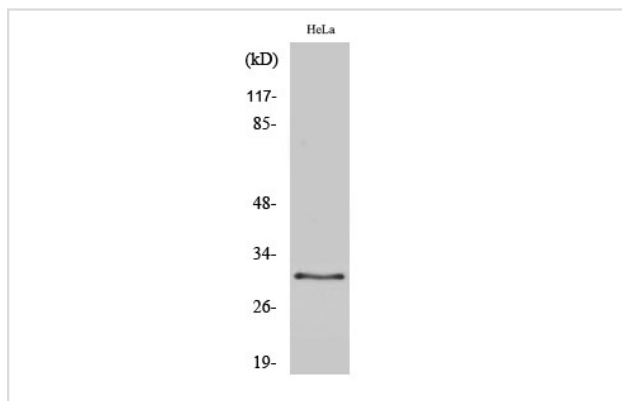
Immunofluorescence: 1/200 - 1/1000.

ELISA: 1/20000.

Not yet tested in other applications.

Images

Western Blot analysis of HeLa cells using CBP 35 Polyclonal Antibody



Note: This product is for in vitro research use only