

CCDC99 Polyclonal Antibody

Catalog No: #40690

Package Size: #40690-1 50ul #40690-2 100ul

Orders: order@signalwayantibody.com

Support: tech@signalwayantibody.com

Description

Product Name	CCDC99 Polyclonal Antibody
Host Species	Rabbit
Clonality	Polyclonal
Purification	The antibody was affinity-purified from rabbit antiserum by affinity-chromatography using epitope-specific immunogen.
Applications	WB ELISA
Species Reactivity	Hu
Specificity	CCDC99 Polyclonal Antibody detects endogenous levels of CCDC99 protein.
Immunogen Type	peptide
Immunogen Description	Synthesized peptide derived from the C-terminal region of human CCDC99.
Target Name	CCDC99
Other Names	CCDC99; Protein Spindly; hSpindly; Arsenite-related gene 1 protein; Coiled-coil domain-containing protein 99; Rhabdomyosarcoma antigen MU-RMS-40.4A
Accession No.	Swiss-Prot: Q96EA4NCBI Gene ID: 54908
Uniprot	Q96EA4
GeneID	54908;
SDS-PAGE MW	70kd
Concentration	1mg/ml
Formulation	Liquid in PBS containing 50% glycerol, 0.5% BSA and 0.02% sodium azide.
Storage	Store at -20°C/1 year

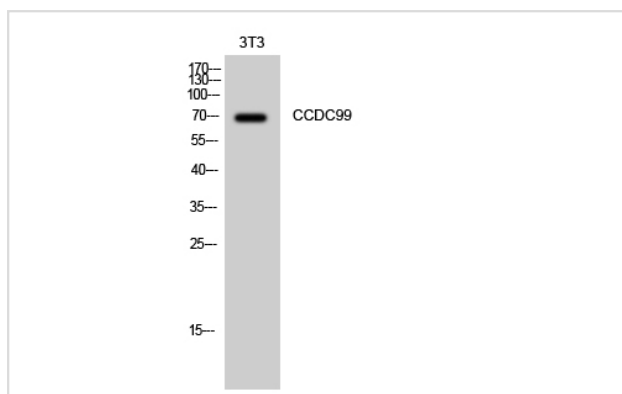
Application Details

Western Blot: 1/500 - 1/2000.

ELISA: 1/40000.

Not yet tested in other applications.

Images



Western Blot analysis of 3T3 cells using CCDC99 Polyclonal Antibody

Note: This product is for in vitro research use only