

CCP2 Polyclonal Antibody

Catalog No: #40691

Package Size: #40691-1 50ul #40691-2 100ul

Orders: order@signalwayantibody.comSupport: tech@signalwayantibody.com

Description

Product Name	CCP2 Polyclonal Antibody
Host Species	Rabbit
Clonality	Polyclonal
Purification	The antibody was affinity-purified from rabbit antiserum by affinity-chromatography using epitope-specific immunogen.
Applications	WB IHC ELISA
Species Reactivity	Hu Ms
Specificity	CCP2 Polyclonal Antibody detects endogenous levels of CCP2 protein.
Immunogen Description	The antiserum was produced against synthesized peptide derived from human CBCP2.
Target Name	CCP2
Other Names	AGBL2; CCP2; Cytosolic carboxypeptidase 2; ATP/GTP-binding protein-like 2
Accession No.	Swiss-Prot: Q5U5Z8NCBI Gene ID: 79841
Uniprot	Q5U5Z8
GeneID	79841;
SDS-PAGE MW	104kd
Concentration	1mg/ml
Formulation	Liquid in PBS containing 50% glycerol, 0.5% BSA and 0.02% sodium azide.
Storage	Store at -20°C/1 year

Application Details

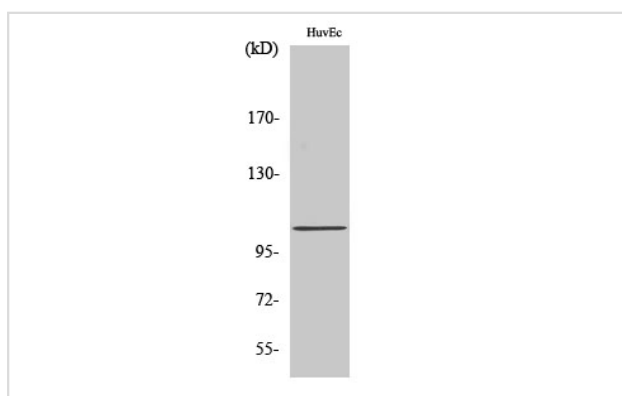
Western Blot: 1/500 - 1/2000.

Immunohistochemistry: 1/100 - 1/300.

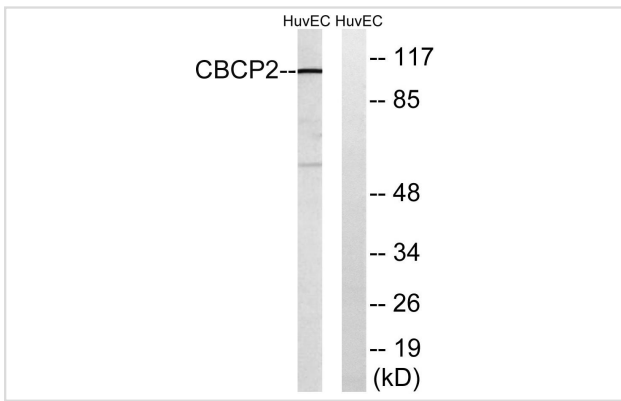
ELISA: 1/40000.

Not yet tested in other applications.

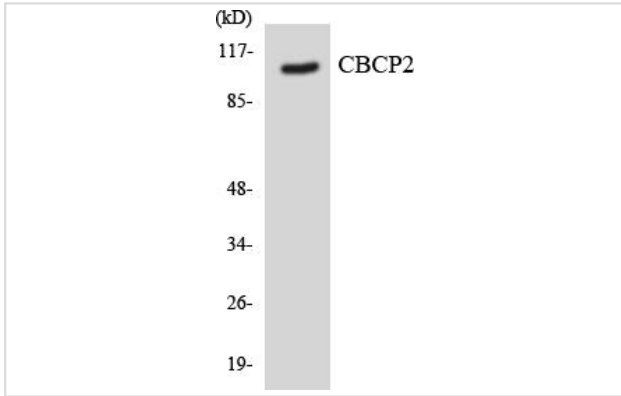
Images



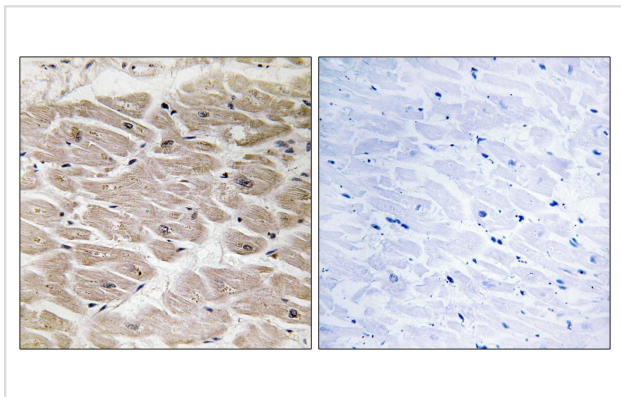
Western Blot analysis of HuvEc cells using CCP2 Polyclonal Antibody



Western blot analysis of lysates from HUVEC cells, using CBCP2 Antibody. The lane on the right is blocked with the synthesized peptide.



Western blot analysis of the lysates from Jurkat cells using CBCP2 antibody.



Immunohistochemistry analysis of paraffin-embedded human heart tissue, using CBCP2 Antibody. The picture on the right is blocked with the synthesized peptide.

Note: This product is for in vitro research use only