

CD137L Polyclonal Antibody

Catalog No: #40695

Package Size: #40695-1 50ul #40695-2 100ul

Orders: order@signalwayantibody.com

Support: tech@signalwayantibody.com

Description

Product Name	CD137L Polyclonal Antibody
Host Species	Rabbit
Clonality	Polyclonal
Purification	The antibody was affinity-purified from rabbit antiserum by affinity-chromatography using epitope-specific immunogen.
Applications	WB IF ELISA
Species Reactivity	Hu
Specificity	CD137L Polyclonal Antibody detects endogenous levels of CD137L protein.
Immunogen Type	peptide
Immunogen Description	Synthesized peptide derived from the Internal region of human CD137L.
Target Name	CD137L
Other Names	TNFSF9; Tumor necrosis factor ligand superfamily member 9; 4-1BB ligand; 4-1BBL
Accession No.	Swiss-Prot: P41273NCBI Gene ID: 8744
Uniprot	P41273
GeneID	8744;
SDS-PAGE MW	23kd
Concentration	1mg/ml
Formulation	Liquid in PBS containing 50% glycerol, 0.5% BSA and 0.02% sodium azide.
Storage	Store at -20°C/1 year

Application Details

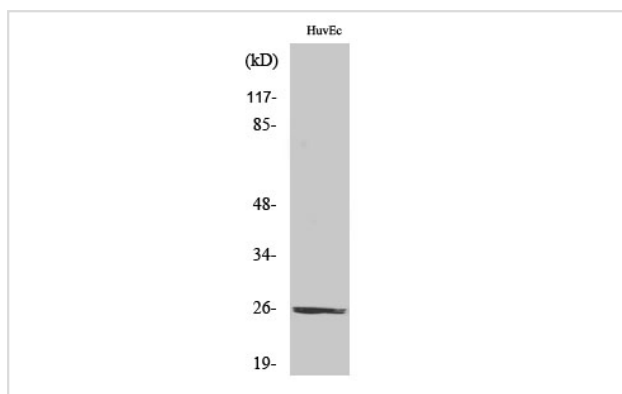
Western Blot: 1/500 - 1/2000.

Immunofluorescence: 1/200 - 1/1000.

ELISA: 1/20000.

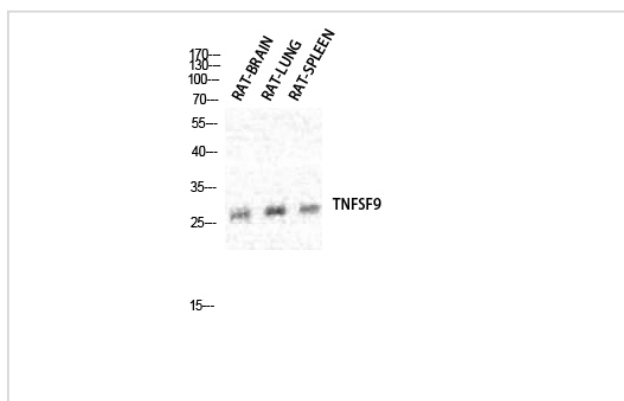
Not yet tested in other applications.

Images



Western Blot analysis of HuvEc cells using CD137L Polyclonal Antibody

Western Blot analysis of RAT-BRAIN RAT-LUNG
RAT-SPLEEN cells using CD137L Polyclonal Antibody



Note: This product is for in vitro research use only